

CATALOG NUMBER : 01B5N1P

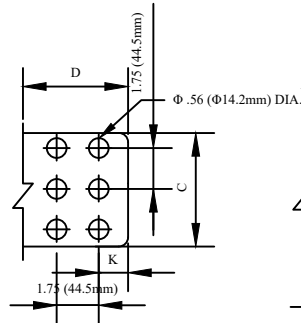


FIG. 3

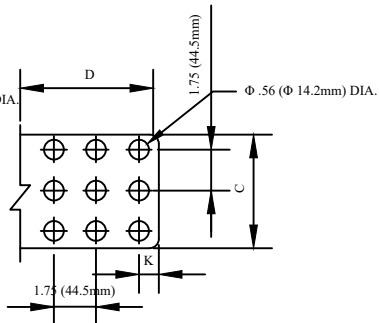


FIG. 4

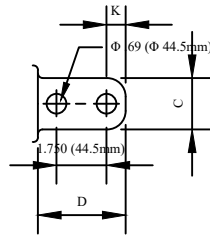


FIG. 2

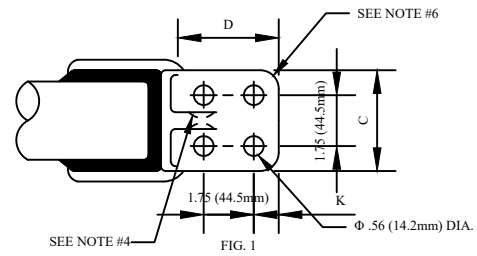


FIG. 1

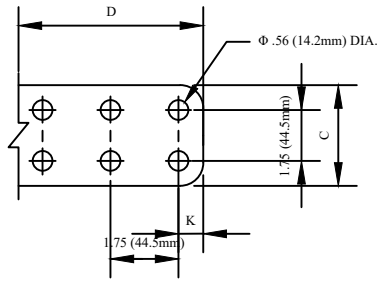


FIG. 5

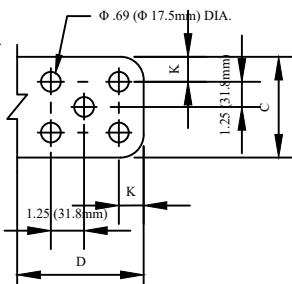
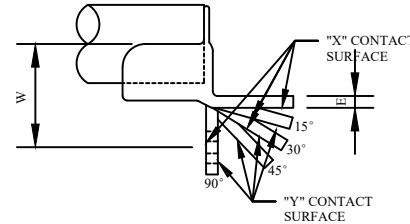
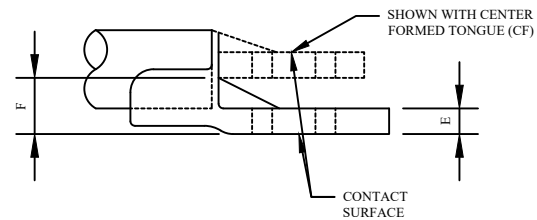


FIG. 6



NOTES:

- 1.MATERIAL: 356-T6 ALUMINUM ALLOY.
- 2.DIMENSION IN INCHES.
- 3.CONNECTORS ARE AVAILABLE IN CENTER FORMED (CF) AND ANGLED TONGUES (15° ,30° ,45° ,60° ,AND 90° ). TO ORDER ANN SUFFIX TO CATALOG NUMBER.
- 4.CONNECTORS ARE PROVIDED WITH CLEARANCE TO RIB FOR STANDARD 1-16" DIA. WASHERS.CLEARANCE FOR LARGER WASHERS UP TO AND INCLUDING 1-5/8" DIA. WILL BE PROVIDED FOR BY THE ADDITION OF "BVW" TO CATALOG NUMBER.
- 5.IF TONGUES IS FINISHED ON BOTH SIDES, RIB IS PARTIALLY REMOVED.
- 6.SOME CONNECTIONS WILL BE FURNISHED WITH SHARP CORNERS ON TONGUE.
- 7.OTHER DRILLING CONFIGURATIONS ARE AVAILABLE UPON REQUEST.
- 8."WTR" SUFFIX DENOTED CONNECTOR WITH TWO RIBS.
- 9."LDL" DENOTES CONNECTORS WITHOUT RIBS.
- 10.IF "XY" IS INSERTED INTO THE CATALOG NUMBER IN THE TABLE, IT REPRESENTS THE DIMENSIONS FOE A CONNECTOR FINISHED ON THE X CONTACT SURFACE "X", THE Y CONTACT SURFACE "Y", AND BOTH SURFACES "XY".

DRN BY:	DATA
Ella	09/07/17
<small>CONFIDENTIAL THIS DRAWING AND ITS CONTENTS PROPERTY OF TIANJIN TUOFA ELECTRIC POWER TECHNOLOGY CO.,LTD. NO PUBLICATION, DISTRIBUTION OR COPIES MAY BE MADE WITHOUT THE WRITTEN CONSENT OF TIANJIN TUOFA ELECTRIC POWER TECHNOLOGY CO.,LTD. TIANJIN TUOFA ELECTRIC POWER TECHNOLOGY CO.,LTD UNPUBLISHED ALL RIGHTS RESERVED UNDER THE COPYRIGHT LAWS.</small>	

WELDMENT  
TERMINAL



TTF POWER TECHNOLOGY CO.

# CATALOG NUMBER : 01B5N1P

CATALOG NUMBER	IPS SIZE	FIG.	A	C	D	E	F	K	L	W
01BSNIP 1B2	0.750	2	2.500	2.000	3.250	3.375	1.500	0.625	6.000	-
01BSNIP 2B2-X-Y-30	0.750	2	1.250	2.000	3.250	3.375	-	0.625	4.688	-
01BSNIP 3B2-X-Y-45	0.750	2	2.500	2.000	3.250	3.375	-	0.625	-	-
01BSNIP 4B2-Y-90	0.750	2	2.500	2.000	3.250	3.375	-	0.625	-	2.813
01BSNIP 5C	0.750	1	2.500	3.000	3.250	3.375	1.500	0.625	6.000	-
01BSNIP 6C-CF	0.750	1	2.500	3.000	3.250	3.375	-	0.625	6.250	-
01BSNIP 7B	1.000	2	2.750	1.500	3.250	3.375	1.188	0.625	6.250	-
01BSNIP 8B2	1.000	2	2.750	2.000	3.250	3.375	1.188	0.625	6.250	-
01BSNIP 9B2-CF	1.000	2	2.750	2.000	3.250	3.375	-	0.625	6.875	-
01BSNIP 10B2-X-Y-15	1.000	2	2.750	2.000	3.250	3.375	-	0.625	-	-
01BSNIP 11B2-X-Y-30	1.000	2	1.250	2.000	3.250	3.375	-	0.625	4.625	-
01BSNIP 12B2-Y-45	1.000	2	2.750	2.000	3.250	3.375	-	0.625	-	-
01BSNIP 13B2-Y-90	1.000	2	2.750	2.000	3.250	3.375	-	0.625	-	3.313
01BSNIP 14C	1.000	1	2.750	3.000	3.250	3.375	1.188	0.625	6.125	-
01BSNIP 15C-CF	1.000	1	4.250	3.000	3.250	3.375	-	0.625	6.875	-
01BSNIP 16C-X-Y-45	1.000	1	3.000	3.000	3.250	3.375	-	0.625	6.250	-
01BSNIP 17C-Y-90	1.000	1	2.750	3.000	3.250	3.375	-	0.625	-	3.313
01BSNIP 18E	1.000	4	2.750	5.000	5.250	5.500	-	0.625	8.250	-
01BSNIP 19B2	1.250	2	3.000	2.000	3.250	3.375	1.375	0.750	6.625	-
01BSNIP 20B2-LPL	1.250	2	3.000	2.000	3.250	3.375	1.375	0.625	6.625	-
01BSNIP 21B2-X-Y-15	1.250	2	1.750	2.000	3.250	3.375	-	0.625	5.750	-
01BSNIP 22B2-Y-90	1.250	2	3.000	2.000	3.250	3.375	-	0.625	-	3.250
01BSNIP 23C	1.250	1	3.000	3.000	3.250	3.375	1.375	0.625	6.375	-
01BSNIP 24C-CF	1.250	1	3.000	3.000	3.250	3.375	-	0.625	6.750	-
01BSNIP 25C-X-Y-45	1.250	1	3.000	3.000	3.250	3.375	-	0.625	6.250	-
01BSNIP 26C-Y-90	1.250	1	3.000	3.000	3.250	3.375	-	0.625	-	3.000
01BSNIP 27D	1.250	1	3.000	4.000	4.250	3.375	1.375	1.125	7.625	-
01BSNIP 28D-LPL	1.250	1	3.000	4.000	4.250	3.375	1.375	1.125	7.625	-
01BSNIP 29D-X-Y-90	1.250	1	3.000	4.000	4.250	3.375	-	1.125	-	-
01BSNIP 30B2	1.500	2	3.250	2.000	3.250	3.375	1.500	0.625	6.750	-
01BSNIP 31B2-CF	1.500	2	3.250	2.000	3.250	3.375	-	0.625	7.188	-
01BSNIP 32B2-X-Y-45	1.500	2	3.250	2.000	3.250	3.375	-	0.625	-	-
01BSNIP 33B2-Y-90	1.500	2	3.375	2.000	3.250	3.375	-	0.625	-	3.625
01BSNIP 34C	1.500	1	3.250	3.000	3.250	3.375	1.500	0.625	6.750	-
01BSNIP 35C-CF	1.500	1	3.250	3.000	3.250	3.375	-	0.625	7.375	-
01BSNIP 36C-X-Y-30	1.500	1	3.250	3.000	3.250	3.375	-	0.625	-	-
01BSNIP 37C-X-Y-45	1.500	1	3.250	3.000	3.250	3.375	-	0.625	-	-
01BSNIP 38C-Y-90	1.500	1	3.250	3.000	3.250	3.375	-	1.125	-	3.125
01BSNIP 39D	1.500	1	2.563	4.000	4.250	3.375	1.469	1.125	6.938	-
01BSNIP 40D-Y-90	1.500	1	3.250	4.000	4.250	3.375	-	1.125	-	3.563
01BSNIP 41B2	2.000	2	3.500	2.000	3.250	3.375	1.750	0.625	7.125	-
01BSNIP 42B2-CF	2.000	2	3.500	2.000	3.250	3.375	-	0.625	7.125	-
01BSNIP 43B2-X-Y-15	2.000	2	3.500	2.000	3.250	3.375	-	0.625	7.688	-
01BSNIP 44B2-X-Y-30	2.000	2	3.500	2.000	3.250	3.375	-	0.625	-	-
01BSNIP 45B2-X-Y-60	2.000	2	3.500	2.000	3.250	3.375	-	0.625	5.875	-
01BSNIP 46B2-Y-90	2.000	2	3.500	2.000	3.250	3.375	-	0.625	-	3.750
01BSNIP 47C	2.000	1	1.750	3.000	3.250	3.375	1.750	0.625	5.500	-
01BSNIP 48C-X-Y-45	2.000	1	1.750	3.000	3.250	3.375	-	0.625	-	-
01BSNIP 49C-CF	2.000	1	3.500	3.000	3.250	3.375	-	0.625	7.375	-
01BSNIP 50C-Y-90	2.000	1	3.500	3.000	3.250	3.375	-	0.625	-	4.000
01BSNIP 51D	2.000	1	3.500	4.000	4.250	3.500	1.750	1.125	7.875	-
01BSNIP 52D-CF	2.000	1	3.500	4.000	4.250	3.500	-	1.125	8.375	-
01BSNIP 53D-X-Y-45	2.000	1	3.500	4.000	4.250	3.375	-	1.125	-	-
01BSNIP 54D-Y-90	2.000	1	3.500	4.000	4.250	3.375	-	1.125	-	4.500
01BSNIP 55B2	2.500	2	3.750	2.000	3.250	3.375	2.000	0.625	7.500	-
01BSNIP 56B2-X-Y-60	2.500	2	3.750	2.000	3.250	3.375	-	0.625	-	-
01BSNIP 57B2-Y-90	2.500	2	3.750	2.000	3.250	3.375	-	0.625	-	3.875
01BSNIP 58C	2.500	1	3.750	3.000	3.250	3.375	2.000	0.625	7.500	-
01BSNIP 59C-CF	2.500	1	3.750	3.000	3.250	3.375	-	0.625	7.500	-
01BSNIP 60C-X-Y-15	2.500	1	3.750	3.000	3.250	3.375	-	0.625	-	-
01BSNIP 61C-X-Y-30	2.500	1	3.750	3.000	3.250	3.375	-	0.625	-	-
01BSNIP 62C-X-Y-60	2.500	1	3.750	3.000	3.250	3.375	-	0.625	-	-
01BSNIP 63C-Y-90	2.500	1	3.750	3.000	3.250	3.375	-	0.625	-	3.625
01BSNIP 64D	2.500	1	3.750	4.000	4.250	3.500	2.000	1.125	8.250	-
01BSNIP 65D-CF	2.500	1	3.750	4.000	4.250	3.500	-	1.125	8.250	-
01BSNIP 66D-X-Y-CF	2.500	1	3.750	4.000	4.250	3.500	-	1.125	8.250	-
01BSNIP 67D-X-Y-15	2.500	1	3.750	4.000	4.250	3.500	-	1.125	-	-
01BSNIP 68D-X-Y-30	2.500	1	3.750	4.000	4.250	3.500	-	1.125	-	-

CATALOG NUMBER	IPS SIZE	FIG.	A	C	D	E	F	K	L	W
01BSNIP 69D-X-Y-45	2.500	1	3.750	4.000	4.250	3.500	-	1.125	-	-
01BSNIP 70D-Y-90	2.500	1	3.750	4.000	4.250	3.500	-	1.125	-	4.375
01BSNIP 71B2	3.000	2	4.000	2.000	3.250	3.375	2.375	0.625	7.813	-
01BSNIP 72B2-X-Y-15	3.000	2	4.000	2.000	3.250	3.375	-	0.625	-	-
01BSNIP 73B2-X-Y-45	3.000	2	4.000	2.000	3.250	3.375	-	0.625	-	-
01BSNIP 74B2-Y-90	3.000	2	4.000	2.000	3.250	3.375	-	0.625	-	4.250
01BSNIP 75C	3.000	1	2.500	3.000	3.250	3.375	2.375	0.625	6.313	-
01BSNIP 76C-CF	3.000	1	4.000	3.000	3.250	3.375	-	0.625	7.875	-
01BSNIP 77C-X-Y-15	3.000	1	4.000	3.000	3.250	3.375	-	0.625	7.938	-
01BSNIP 78C-X-Y-30	3.000	1	4.000	3.000	3.250	3.375	-	0.625	7.688	-
01BSNIP 79C-X-Y-60	3.000	1	4.000	3.000	3.250	3.375	-	0.625	-	-
01BSNIP 80C-Y-90	3.000	1	4.000	3.000	3.250	3.375	-	0.625	-	4.000
01BSNIP 81D	3.000	1	4.000	4.000	4.250	3.375	2.375	1.125	8.938	-
01BSNIP 82D-CF	3.000	1	4.000	4.000	4.250	3.375	-	1.125	8.875	-
01BSNIP 83D-X-Y-CF	3.000	1	1.750	4.000	4.125	3.375	-	1.125	6.625	-
01BSNIP 84D-DE	3.000	1	4.000	4.000	4.250	3.375	1.875	1.125	8.375	-
01BSNIP 85D-WTR	3.000	1	4.000	4.000	4.250	3.375	2.343	1.125	8.750	-
01BSNIP 86D-CF	3.000	5	2.500	4.000	4.125	3.375	-	1.125	9.250	-
01BSNIP 87D-X-Y-45	3.000	1	4.000	4.000	4.250	3.375	-	1.125	-	-
01BSNIP 88D-X-Y-60	3.000	1	1.750	4.000	4.125	3.375	-	1.125	-	-
01BSNIP 89D-X-Y-75	3.000	1	4.000	4.000	4.250	3.375	-	1.125	-	-
01BSNIP 90D-Y-90	3.000	1	4.000	4.000	4.250	3.375	-	1.125	-	4.719
01BSNIP 91N-CF	3.000	3	2.500	6.000	4.125	3.375	-	1.125	7.250	-
01BSNIP 92B-CF	3.500	2	4.250	1.500	3.250	3.375	-	0.625	8.063	-
01BSNIP 93B2	3.500	2	4.250	2.000	3.375	3.375	2.594	0.625	8.000	-
01BSNIP 94B2-CF	3.500	2	4.250	2.000	3.250	3.375	-	0.625	8.063	-
01BSNIP 95B2-Y-90	3.500	2	1.750	2.000	3.250	3.375	-	0.625	-	4.250
01BSNIP 96C	3.500	1	4.250	3.000	3.250	3.375	2.625	0.625	7.750	-
01BSNIP 97C-CF	3.500	1	4.250	3.000	3.250	3.375	-	0.625	8.438	-
01BSNIP 98C-X-Y-45	3.500	1	4.250	3.000	3.250	3.375	-	0.625	-	-
01BSNIP 99C-Y-90	3.500	1	4.250	3.000	3.250	3.375	-	1.125	-	4.250
01BSNIP 100D	3.500	1	4.250	4.000	4.250	3.375	2.625	1.125	8.750	-
01BSNIP 101D-LPL	3.500	1	4.250	4.000	4.250	3.375	3.000	1.125	9.000	-
01BSNIP 102D-CF	3.500	1	4.250	4.000	4.250	3.375	-	1.125	9.125	-
01BSNIP 103D-CF-CE1	3.500	1	4.250	4.000	4.250	3.375	-	1.125	8.750	-
01BSNIP 104D-CF-X-Y-CE1	3.500	1	4.250	4.000	4.250	3.375	-	1.125	8.750	-
01BSNIP 105D-CF-NM	3.500	1	4.250	4.000	4.250	3.375	-	1.125	9.125	-
01BSNIP 106D-X-Y-30	3.500	1	4.250	4.000	4.250	3.375	-	1.125	-	-
01BSNIP 107D-X-Y-45	3.500	1	4.250	4.000	4.250	3.375	-	1.125	-	-
01BSNIP 108D-Y-90	3.500	1	4.250	4.000	4.250	3.375	-	1.125	-	4.750
01BSNIP 109B2	4.000	2	4.250	2.000	3.250	3.375	1.844	0.625	8.125	-
01BSNIP 110B2-CF	4.000	2	4.250	2.000	3.250	3.375	-	0.625	8.188	-
01BSNIP 111B2-X-Y-75	4.000	2	4.250	2.000	3.250	3.375	-	0.625	-	-
01BSNIP 112B2-X-Y-90	4.000	2								