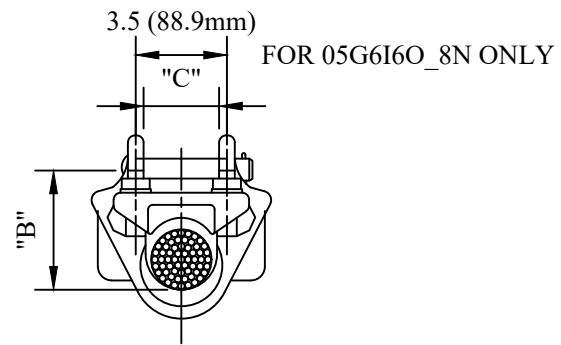
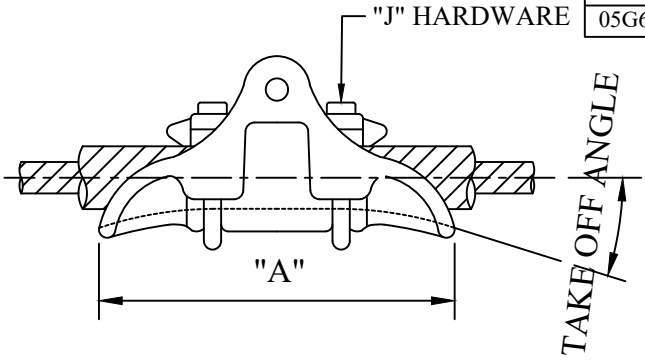
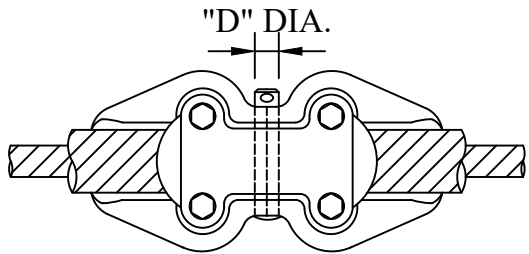


CATALOG NUMBER : 05G6160

CATALOG NUMBER	CLAMPING RANGE	DIMENSIONS IN INCHES					ULTIMATE STRENGTH	CLAMP TAKE-OFF
		A	B	C	D	J	IN POUNDS	ANGLE
05G6160_1N	1.38-1.62	9.50	3.00	1.72	.62	.50	25,000	17.5°
05G6160_2N	1.55-1.82	10.00	3.25	2.06	.62	.50	25,000	17.5°
05G6160_3N	1.73-2.14	10.50	3.50	2.16	.62	.50	25,000	17.5°
05G6160_4N	1.80-2.13	11.81	3.62	2.25	.62	.62	25,000	17.5°
05G6160_5N	1.93-2.27	11.00	4.00	2.38	.62	.62	25,000	17.5°
05G6160_6N	2.14-2.52	12.00	4.50	2.69	.65	.62	30,000	17.5°
05G6160_7N	2.14-2.52	12.00	4.75	2.69	1.00	.62	66,000	20°
05G6160_8N	2.29-2.80	14.00	5.03	3.00	.75	.62	30,000	20°
05G6160_9-5/8-N	2.29-2.80	14.00	5.03	3.00	.62	.62	25,000	20°
05G6160_10N-7/8	2.29-2.80	14.00	5.03	3.00	.88	.62	43,000	20°




NOTES:

- MATERIAL: CLAMP BODY & KEEPER 356-T6 ALUM. ALLOY - AEC SPEC. 5404
 CLEVIS PIN - STEEL, HOT DIP GALVANIZED - ASTM 273 - 58T
 HARDWARE - STEEL, HOT DIP GALVANIZED - ASTM 273 - 58T
 COTTER PIN - HUMPBACK - #302 STAINLESS STEEL - ASTM A313
 ALL GALVANIZING PR ASTM - A153
- BOLT, NUT & COTTER PIN MAY BE SUBSTITUTED FOR CLEVIS PIN WHEN REQ'D.
 TO ORDER ANN SUFFIX "BNK" TO CATALOG NUMBER.

DRN BY:	DATA
Ella	09/07/17
<small>CONFIDENTIAL THIS DRAWING AND ITS CONTENTS PROPERTY OF TIANJIN TUOFA ELECTRIC POWER TECHNOLOGY CO.,LTD. NO PUBLICATION, DISTRIBUTION OR COPIES MAY BE MADE WITHOUT THE WRITTEN CONSENT OF TIANJIN TUOFA ELECTRIC POWER TECHNOLOGY CO.,LTD. TIANJIN TUOFA ELECTRIC POWER TECHNOLOGY CO.,LTD UNPUBLISHED ALL RIGHTS RESERVED UNDER THE COPYRIGHT LAWS.</small>	

**SUSPENSION CLAMP
WITH CLEVIS**



TTF POWER TECHNOLOGY CO.