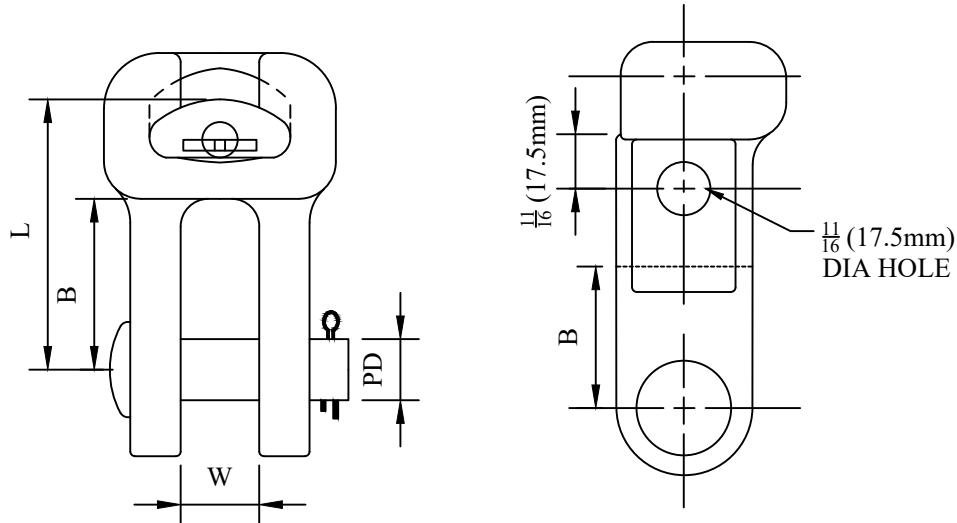


CATALOG NUMBER : 05A0Z5I



NOTES:
 MATERIAL: BODY – GALVANIZED DUCTILE IRON
 CLEVIS PIN – GALVANIZED STEEL
 COTTER PIN – STAINLESS STEEL

PRODUCT DATA

CATALOG NUMBER	ULTIMATE STRENGTH LB (KN)	DIMENSIONS INCHES (MM)				APPROX WT WIGHT LB (KG)
		M	L	B	PD	
05A0Z5I_1	30,000 (133)	$\frac{7}{8}$ (22.2)	$2\frac{5}{8}$ (66.7)	$1\frac{11}{16}$ (42.9)	$\frac{5}{8}$ (15.9)	2.0 (.91)
05A0Z5I_2	30,000 (133)	$\frac{7}{8}$ (22.2)	$4\frac{1}{2}$ (114.3)	$1\frac{15}{16}$ (49.2)	$\frac{5}{8}$ (15.9)	3.5 (1.58)
05A0Z5I_3	30,000 (133)	$1\frac{1}{8}$ (28.6)	$3\frac{7}{8}$ (98.4)	$2\frac{7}{8}$ (72)	$\frac{5}{8}$ (15.9)	3.0 (1.36)

DRN BY:	DATA
Ella	08/06/17
<small>CONFIDENTIAL THIS DRAWING AND ITS CONTENTS PROPERTY OF TIANJIN TUOFA ELECTRIC POWER TECHNOLOGY CO.,LTD. NO PUBLICATION, DISTRIBUTION OR COPIES MAY BE MADE WITHOUT THE WRITTEN CONSENT OF TIANJIN TUOFA ELECTRIC POWER TECHNOLOGY CO.,LTD. TIANJIN TUOFA ELECTRIC POWER TECHNOLOGY CO.,LTD UNPUBLISHED ALL RIGHTS RESERVED UNDER THE COPYRIGHT LAWS.</small>	

SOCKET EYE
 CLEVIS



TTF POWER TECHNOLOGY CO.