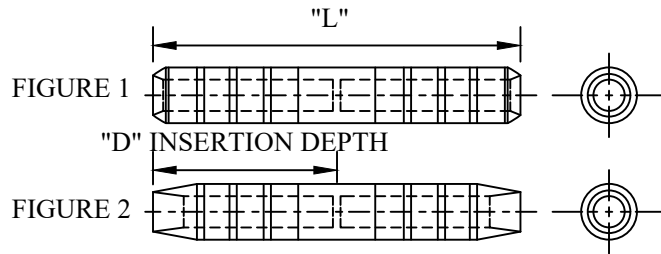


CATALOG NUMBER : 01C7N8K



CATALOG NUMBER	FIGURE	CONDUCTOR TYPE AND SIZES (ACSR, OR AAC - REFER TO NOTES 5, 6, AND 7 ABOVE)			DIMENSIONS IN INCHES (MILLIMETERS)		TOOLING AND NUMBER OF CRIMPS PER END		
		ACSR - AWG OR MAC	STRAND AAC-AWG OR MCM		L	D	VC-5 TOOLS	VC-6 TOOLS	VC-8 'AL' NIBS
01C7N8K_1	1	#2 (7/1, 6/1) #4 (7/1, 6/1) #6 (6/1)	#2 (19, 7), #3 (7), #4 (7) #6 (7)		4-5/8 (117.5)	2-1/4 (57.2)	4	2	-
01C7N8K_2	1	2/0 (6/1) #2 (7/1, 6/1) 1/0 (6/1) #1 (6/1)	2/0 (19,7), 1/0 (19,7), #1 (19, 7), #2 (19, 7)		6 (152.4)	2-15/16 (74.6)	6	3	-
01C7N8K_3	1	4/0 (6/1) 1/0 (7 6/1) 3/0 (6/1) 2/0 (6/1)	4/0 (19,7), 3/0 (19,7), 2/0 (19, 7), 1/0 (19, 7)		7-3/8 (187.3)	3-5/8 (92.1)	8	4	-
01C7N8K_4	1	477 (18/1, 36/1) 4/0 (6/1) 397.5 (18/1, 36/1) 366.4 (18/1, 36/1) 266.8 (18/1, 36/1)	500 (37, 19) 477 (37, 19) 450 (37, 19) 400 (37)	397.5 (19) 350 (37, 19) 336.4 (19) 300 (37, 19)	266.8 (19, 7) 250 (37, 19) 4/0 (19, 7)	7-3/8 (187.3)	3-5/8 (92.1)	-	4
01C7N8K_5	2	477 (26/7, 24/7, 18/1) 397.5 (26/7, 24/7, 18/1) 366.4 (30/7, 26/7, 24/7, 18/1) 266.8 (30/7, 26/7, 24/7, 18/1)	556.5 (37, 19) 500 (37, 19) 477 (37, 19)	397.5 (19) 350 (37, 19) 336.4 (19)	266.8 (19, 7) 250 (37, 19) 400 (37)	11-1/8 (282.6)	5-1/2 (139.7)	-	4
01C7N8K_6	2	636 (18/1, 36/1) 556.5 (18/1, 24/7, 26/7) 477 (26/7)	636 (37), 556.5 (37)		12-7/8 (327.0)	6-3/8 (161.9)	-	-	5
01C7N8K_8	2	795 (36/1) 666.6 (24/7) 636 (26/7, 24/7, 18/1) 605 (26/7, 24/7)	715.5 (61, 37), 795 (61, 37), 700 (61)		12-7/8 (327.0)	6-3/8 (161.9)	-	-	5
01C7N8K_9	2	795 (26/7, 54/7, 24/7, 45/7, 36/1) 715 (26/7)	900 (61, 37)		14-5/8 (371.5)	7-1/4 (184.2)	-	-	6
01C7N8K_10	2	954 (54/7, 45/7) 900 (54/7, 45/7) 795 (26/7)	1033.5 (61, 37), 1000 (61), 954 (61, 37)		14-5/8 (371.5)	7-1/4 (184.2)	-	-	6
01C7N8K_11	2	1,113 (45/7)	1113 (61), 1192 (61)		14-5/8 (371.5)	7-1/4 (184.2)	-	-	6

NOTES:

- 1.MATERIAL: HIGH CONDUCTIVITY ALUMINUM ALLOY.
- 2.CONNECTORS TESTED IN ACCORDANCE WITH EEI, NEMA PERFORMANCE CRITERIA PER TDJ-162/CC3-1973.
- 3.CONNECTORS ARE PRE-CLEANED, FACTORY INHIBITED AND CAPPED ON EACH END WITH PLASTIC CAPS.
- 4.CONNECTOR INFORMATION AND CRIMP LOCATIONS PERMANENTLY INDENTED.
- 5.ALL CONDUCTOR SHOULD BE VIGOROUSLY CLEANED TO REMOVE OXIDES, GREASE, OIL, AND OTHER FOREIGN MATTER. A BRIGHT SURFACE SHOULD BE OBTAINED ON ALUMINUM AND ACSR CONDUCTORS.
- 6.ALUMINUM ALLOY CONDUCTOR IN CHART BELOW. 6201(AAAC) IS RECOMMENDED FOR 800 SERIES CONNECTORS ONLY.
- 7.COMPRESSED (COMPACT) CONDUCTOR SIZES WITHIN THE SAME DECIMAL CONDUCTOR RANGE ARE RECOMMENDED.

DRN BY:	DATA
Ella	09/07/17
<small>CONFIDENTIAL-THIS DRAWING AND ITS CONTENTS PROPERTY OF TIANJIN TUOFA ELECTRIC POWER TECHNOLOGY CO.,LTD. NO PUBLICATION, DISTRIBUTION OR COPIES MAY BE MADE WITHOUT THE WRITTEN CONSENT OF TIANJIN TUOFA ELECTRIC POWER TECHNOLOGY CO.,LTD. TIANJIN TUOFA ELECTRIC POWER TECHNOLOGY CO.,LTD UNPUBLISHED ALL RIGHTS RESERVED UNDER THE COPYRIGHT LAWS.</small>	

PARTIAL TENSION ALUMINUM COMPRESSION SPLICE



TTF POWER TECHNOLOGY CO.