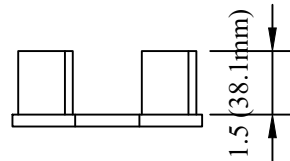
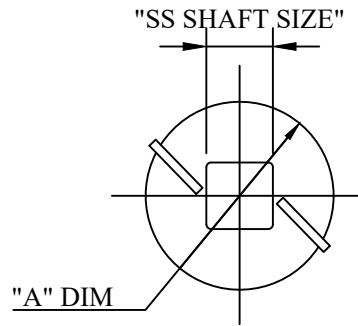
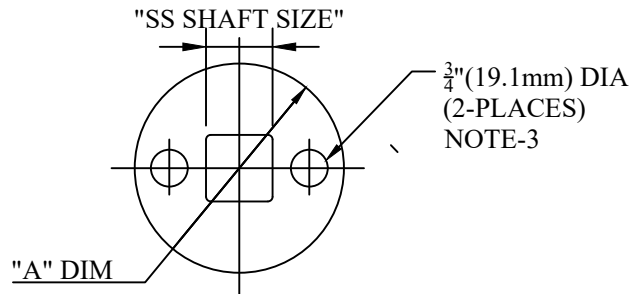


CATALOG NUMBER : 03C3V4A

DISPLACEMENT PLATES FOR UN-CASED GROUT COLUMNS



LEAD DISPLACEMENT PLATE (LDP)



EXTENSION DISPLACEMENT PLATE (LDP)

NOTES:

1. MATERIAL: $\frac{1}{4}$ " THICK STEEL.
2. $\frac{3}{4}$ " DIA. HOLES LOCATED ON CENTER LINE $\pm\frac{1}{8}$ ".
3. PADDLES OVERHANG OUTSIDE PERIMETER OF PLATE.

LEAD DISPLACEMENT PLATE		
CATALOG NUMBER	"A" DIM	SS SHAFT SIZE
03C3V4A_1	5 (127)	1.5 (38.1)
03C3V4A_2	5 (127)	1.75 (44.5)

EXTENSION DISPLACEMENT PLATE		
CATALOG NUMBER	"A" DIM	SS SHAFT SIZE
03C3V4A_3	5 (127)	1.5 (38.1)
03C3V4A_4	5 (127)	1.75 (44.5)

DRN BY:	DATA
Ella	08/06/17
<small>CONFIDENTIAL THIS DRAWING AND ITS CONTENTS PROPERTY OF TIANJIN TUOFA ELECTRIC POWER TECHNOLOGY CO.,LTD. NO PUBLICATION, DISTRIBUTION OR COPIES MAY BE MADE WITHOUT THE WRITTEN CONSENT OF TIANJIN TUOFA ELECTRIC POWER TECHNOLOGY CO.,LTD. TIANJIN TUOFA ELECTRIC POWER TECHNOLOGY CO.,LTD UNPUBLISHED ALL RIGHTS RESERVED UNDER THE COPYRIGHT LAWS.</small>	

HELICAL PULLDOWN
MICROPILE WASHER



TTF POWER TECHNOLOGY CO.