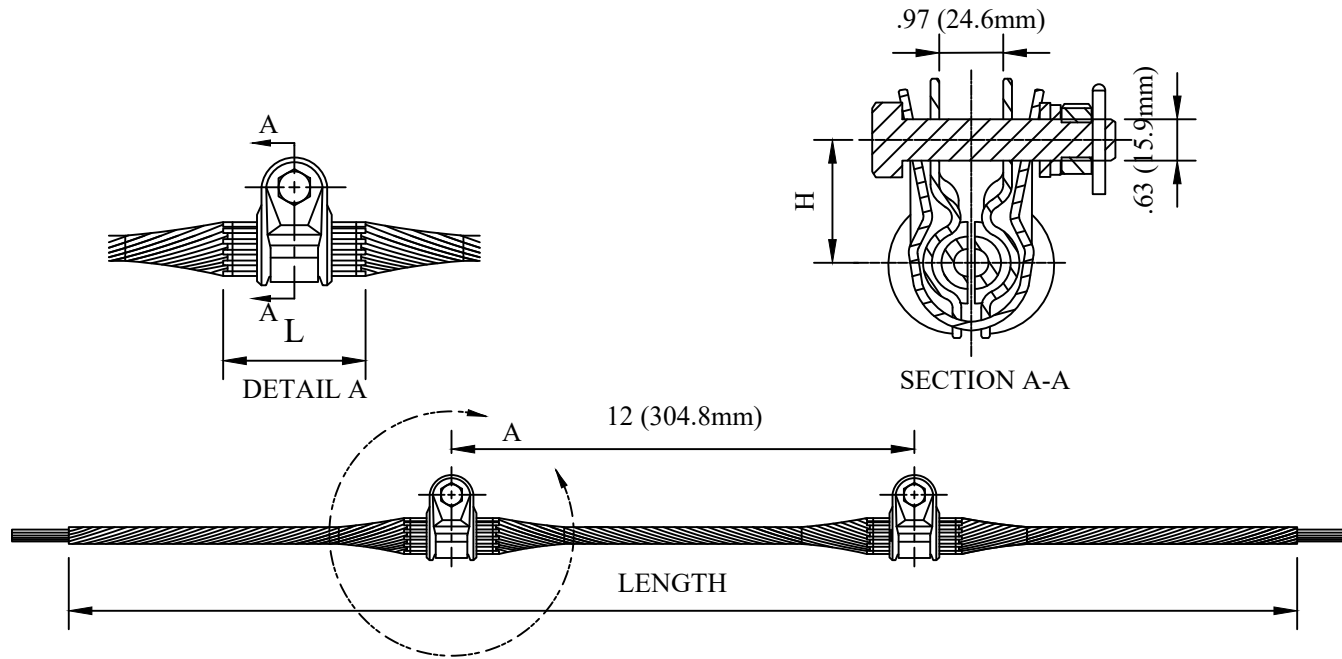


CATALOG NUMBER : 05G7E9F



NOTES:

1. MATERIAL:

- CLAMP BODY - ALUMINUM ALLOY
- RUBBER INSERT - EPDM RUBBER
- HELICAL RODS - xxxxxxxxS - GALVANIZED STEEL
- xxxxxxxW - ALUMINUM CLAD
- HARDWARE (BOLT, NUT, FLAT WASHER & LOCK WASHER) - GALV. STEEL
- COTTER STEEL - STAINLESS STEEL

2. DIMENSIONS IN INCHES [MILLIMETERS]

3. MAXIMUM TAKE OFF ANGLE = 30° - 60°

4. ULTIMATE STRENGTH 5000 LBS

5. SLIP LOAD 8% - 11% OF CONDUCTOR RBS

6. BODY AND RUBBER INSERT CAN BE IDENTIFIED BY THE CONDUCTOR RANGE MARKED ON THEM. HELICAL RODS HAVE CONDUCTOR RANGE MARKED ON A TAG ATTACHED TO THE BUNDLE AS WELL THE AS THE COLOR PAINT MARK. PLEASE NOTE SOME PARTS HAVE LARGER RANGES AND CAN BE USED ON MULTIPLE SIZES.

DRN BY:	DATA
Ella	09/07/17
<small>CONFIDENTIAL THIS DRAWING AND ITS CONTENTS PROPERTY OF TIANJIN TUOFA ELECTRIC POWER TECHNOLOGY CO.,LTD. NO PUBLICATION, DISTRIBUTION OR COPIES MAY BE MADE WITHOUT THE WRITTEN CONSENT OF TIANJIN TUOFA ELECTRIC POWER TECHNOLOGY CO.,LTD. TIANJIN TUOFA ELECTRIC POWER TECHNOLOGY CO.,LTD UNPUBLISHED ALL RIGHTS RESERVED UNDER THE COPYRIGHT LAWS.</small>	

DOUBLE SHEILD WIRE
SUSPENSION CLAMP ASSEMBLY



TTF POWER TECHNOLOGY CO.

CATALOG NUMBER : 05G7E9F

CATALOG NUMBER	CONDUCTOR DIA. RANGE	ROD PER SET	HYPE	L INCHES [MM]	LENGTH INCHES [MM]	WEIGHT [KG]
05G0B80_1S	0.272 - 0.283 [6.91 - 7.19]	8	GALV. STEEL	3.25 [83]	38.0 [965]	2.38 [1.08]
05G0B80_2S	0.284 - 0.294 [7.21 - 7.47]	9		3.25 [83]		
05G0B80_3S	0.295 - 0.303 [7.49 - 7.70]			3.25 [83]		
05G0B80_4S	0.304 - 0.315 [7.72 - 8.00]			3.25 [83]		
05G0B80_5S	0.316 - 0.327 [8.02 - 8.31]			3.25 [83]		
05G0B80_6S	0.328 - 0.342 [8.33 - 8.69]			10		3.25 [83]
05G0B80_7S	0.343 - 0.355 [8.71 - 9.02]	3.25 [83]				
05G0B80_8S	0.356 - 0.374 [9.04 - 9.45]	3.25 [83]				
05G0B80_9S	0.375 - 0.389 [9.47 - 9.88]	3.25 [83]				
05G0B80_10S	0.390 - 0.404 [9.90 - 10.26]	4 [102]				
05G0B80_11S	0.405 - 0.418 [10.28 - 10.62]	11		4 [102]	48.0 [1219]	3.74 [1.70]
05G0B80_12S	0.419 - 0.434 [10.64 - 11.02]			4 [102]		
05G0B80_13S	0.435 - 0.450 [11.04 - 11.43]			4 [102]		
05G0B80_14S	0.451 - 0.470 [11.45 - 11.94]			4 [102]		
05G0B80_15S	0.471 - 0.481 [11.96 - 12.22]			4 [102]		
05G0B80_16S	0.482 - 0.500 [12.24 - 12.70]	12		4 [102]	57.0 [1448]	4.82 [2.19]
05G0B80_17W	0.272 - 0.283 [6.91 - 7.19]	9	ALUMINUM CLAD	3.25 [83]	38.0 [965]	2.36 [1.07]
05G0B80_18W	0.284 - 0.294 [7.21 - 7.47]			3.25 [83]		
05G0B80_19W	0.295 - 0.303 [7.49 - 7.70]			3.25 [83]		
05G0B80_20W	0.304 - 0.315 [7.72 - 8.00]			3.25 [83]		
05G0B80_21W	0.316 - 0.327 [8.02 - 8.31]			3.25 [83]		
05G0B80_11W	0.405 - 0.418 [10.28 - 10.62]	10		3.25 [83]		48.0 [1219]
05G0B80_23W	0.343 - 0.355 [8.71 - 9.02]			3.25 [83]		
05G0B80_24W	0.356 - 0.374 [9.04 - 9.45]			3.25 [83]		
05G0B80_25W	0.375 - 0.389 [9.47 - 9.88]			3.25 [83]		
05G0B80_26W	0.390 - 0.404 [9.90 - 10.26]			4 [102]		
05G0B80_27W	0.405 - 0.418 [10.28 - 10.62]	10		4 [102]	48.0 [1219]	3.52 [1.60]
05G0B80_28W	0.419 - 0.434 [10.64 - 11.02]			4 [102]		
05G0B80_29W	0.435 - 0.450 [11.04 - 11.43]			4 [102]		
05G0B80_30W	0.451 - 0.470 [11.45 - 11.94]			4 [102]		
05G0B80_31W	0.471 - 0.481 [11.96 - 12.22]			4 [102]		
05G0B80_32W	0.482 - 0.500 [12.24 - 12.70]	11		4 [102]	57.0 [1448]	3.88 [1.76]

DRN BY:	DATA
Ella	09/07/17
<small>CONFIDENTIAL: THIS DRAWING AND ITS CONTENTS PROPERTY OF TIANJIN TUOFA ELECTRIC POWER TECHNOLOGY CO., LTD. NO PUBLICATION, DISTRIBUTION OR COPIES MAY BE MADE WITHOUT THE WRITTEN CONSENT OF TIANJIN TUOFA ELECTRIC POWER TECHNOLOGY CO., LTD. TIANJIN TUOFA ELECTRIC POWER TECHNOLOGY CO., LTD UNPUBLISHED ALL RIGHTS RESERVED UNDER THE COPYRIGHT LAWS.</small>	

**DOUBLE SHEILD WIRE
SUSPENSION CLAMP ASSEMBLY**

TTF POWER TECHNOLOGY CO.