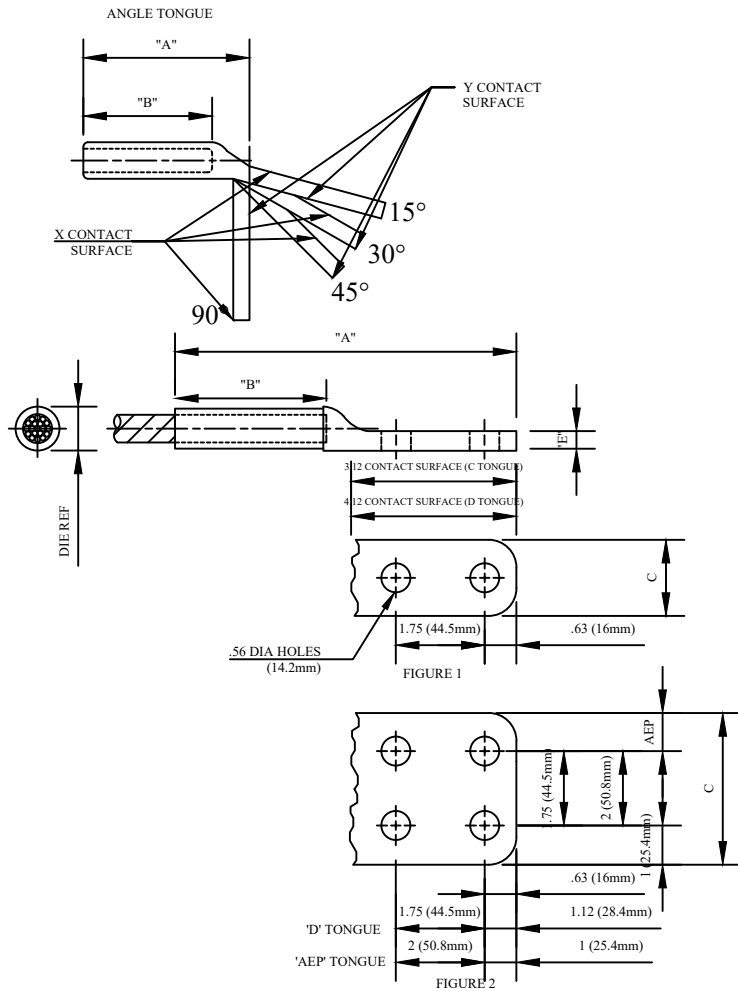


# CATALOG NUMBER : 01B1V0R



NOTES:  
 1. MATERIAL - COPPER ALLOY CDA 11000  
 \*2. 'AEP' SUFFIX REQUIRES (4) .69 DIA HOLES ON 2.0 CENTERS IN TONGUE.

CATALOG NUMBER	FIG NUMBER	CONDUCTOR SIZE					DIMENSIONS INCHES (MM)					
		7	19	37	61	91	127	DIE REF	A	B	X	E
01B1V0R 1-B	1	#4						.640 (16.3)	6.00 (152.4)	2.00 (50.8)	1.19 (30.2)	0.25 (6.4)
01B1V0R 2-B	1	*2	*2					.640 (16.3)	6.00 (152.4)	2.00 (50.8)	1.19 (30.2)	0.25 (6.4)
01B1V0R 3-B	1	#1	#1					.640 (16.3)	6.75 (171.5)	3.00 (76.2)	1.50 (38.1)	0.38 (9.7)
01B1V0R 4-B	1	1/0	1/0					.840 (21.3)	7.13 (181.1)	2.75 (69.9)	1.50 (38.1)	0.28 (7.1)
01B1V0R 5-B	1	2/0	2/0					.840 (21.3)	7.13 (181.1)	2.75 (69.9)	1.50 (38.1)	0.28 (7.1)
01B1V0R 6-B2	1	2/0	2/0					.840 (21.3)	7.13 (181.1)	2.75 (69.9)	1.75 (44.5)	0.38 (9.7)
01B1V0R 7-C	2	2/0	2/0					.840 (21.3)	7.88 (200.2)	2.75 (69.9)	3.00 (76.2)	0.29 (7.4)
01B1V0R 8-B	1	3/0	3/0					.840 (21.3)	7.13 (181.1)	2.75 (69.9)	1.50 (38.1)	0.28 (7.1)
01B1V0R 9-B	1	4/0	4/0					.840 (21.3)	7.13 (181.1)	2.75 (69.9)	1.50 (38.1)	0.28 (7.1)
01B1V0R 10-C	2	4/0	4/0					.840 (21.3)	7.88 (200.2)	2.75 (69.9)	3.00 (76.2)	0.29 (7.4)
01B1V0R 11-C-45	2	4/0	4/0					.840 (21.3)	-	2.75 (69.9)	3.00 (76.2)	0.29 (7.4)
01B1V0R 12-C-X/Y-90	2	4/0	4/0					.840 (21.3)	-	2.75 (69.9)	3.00 (76.2)	0.29 (7.4)
01B1V0R 13-B	1		250	250	250			.840 (21.3)	7.13 (181.1)	2.75 (69.9)	1.50 (38.1)	0.28 (7.1)
01B1V0R 14-C	2		250	250	250			.840 (21.3)	7.88 (200.2)	2.75 (69.9)	3.00 (76.2)	0.29 (7.4)
01B1V0R 15-B	1		300	300	300			1.000 (25.4)	7.38 (187.5)	3.00 (76.2)	1.50 (38.1)	0.34 (8.6)
01B1V0R 16-B-X/Y-90	1		300	300	300			1.000 (25.4)	-	3.00 (76.2)	1.50 (38.1)	0.34 (8.6)
01B1V0R 17-C	2		300	300	300			1.000 (25.4)	8.06 (204.7)	3.00 (76.2)	3.00 (76.2)	0.29 (7.4)
01B1V0R 18-C-X/Y-90	2		300	300	300			1.000 (25.4)	-	3.00 (76.2)	3.00 (76.2)	0.29 (7.4)
01B1V0R 19-B	1		350	350	350			1.000 (25.4)	7.38 (187.5)	3.00 (76.2)	1.50 (38.1)	0.34 (8.6)
01B1V0R 20-B-X/Y-90	1		350	350	350			1.000 (25.4)	-	3.00 (76.2)	1.50 (38.1)	0.34 (8.6)
01B1V0R 21-C	2		350	350	350			1.000 (25.4)	8.06 (204.7)	3.00 (76.2)	3.00 (76.2)	0.29 (7.4)
01B1V0R 22-C-X/Y-90	2		350	350	350			1.000 (25.4)	-	3.00 (76.2)	3.00 (76.2)	0.29 (7.4)
01B1V0R 23-C	2		400	400				1.125 (28.6)	8.75 (222.3)	3.50 (88.9)	3.00 (76.2)	0.28 (7.1)
01B1V0R 24-B2	1			500	500	500		1.125 (28.6)	7.88 (200.2)	3.50 (88.9)	1.75 (44.5)	0.38 (9.7)
01B1V0R 25-C	2			500	500	500		1.125 (28.6)	8.75 (222.3)	3.50 (88.9)	3.00 (76.2)	0.28 (7.1)
01B1V0R 26-D	2			500	500	500		1.125 (28.6)	9.31 (236.5)	3.50 (88.9)	4.00 (101.6)	0.48 (12.2)
01B1V0R 27-B2	1			600	600			1.125 (28.6)	8.63 (219.2)	4.00 (101.6)	1.75 (44.5)	0.50 (12.7)
01B1V0R 28-B	1			750	750			1.312 (33.3)	8.63 (219.2)	4.00 (101.6)	1.50 (38.1)	0.50 (12.7)
01B1V0R 29-B2	1			750	750			1.312 (33.3)	8.63 (219.2)	4.00 (101.6)	1.75 (44.5)	0.50 (12.7)
01B1V0R 30-B2-X/Y-30	1			750	750			1.312 (33.3)	-	4.00 (101.6)	1.75 (44.5)	0.50 (12.7)
01B1V0R 31-C	2			750	750			1.312 (33.3)	9.00 (228.6)	4.00 (101.6)	3.00 (76.2)	0.28 (7.1)
01B1V0R 32-D	2			750	750			1.312 (33.3)	9.75 (247.7)	4.00 (101.6)	4.00 (101.6)	0.42 (10.7)
01B1V0R 33-D-X/Y-90	2			750	750			1.312 (33.3)	9.75 (247.7)	4.00 (101.6)	4.00 (101.6)	0.42 (10.7)
01B1V0R 34-B2	1				800			1.500 (38.1)	8.88 (225.6)	4.00 (101.6)	2.00 (50.8)	0.63 (16.0)
01B1V0R 35-B2-X/Y-30	1				800			1.500 (38.1)	-	4.00 (101.6)	2.00 (50.8)	0.63 (16.0)
01B1V0R 36-B2-X/Y-90	1				800			1.500 (38.1)	-	4.00 (101.6)	2.00 (50.8)	0.63 (16.0)
01B1V0R 37-B2	1				1000	1000		1.500 (38.1)	8.88 (225.6)	4.00 (101.6)	2.00 (50.8)	0.63 (16.0)
01B1V0R 38-B2-X/Y-30	1				1000	1000		1.500 (38.1)	-	4.00 (101.6)	2.00 (50.8)	0.63 (16.0)
01B1V0R 39-C	2				1000	1000		1.500 (38.1)	9.00 (228.6)	4.00 (101.6)	3.00 (76.2)	0.38 (9.7)
01B1V0R 40-D	2				100	1000		1.500 (38.1)	9.75 (247.7)	4.00 (101.6)	4.00 (101.6)	0.42 (10.7)
01B1V0R 41-AEP	*2				1000	1000		1.500 (38.1)	9.75 (247.7)	4.00 (101.6)	4.00 (101.6)	0.42 (10.7)
01B1V0R 42-C	2				1500	1500		2.125 (54.0)	10.18 (258.6)	5.00 (127.0)	3.00 (76.2)	0.75 (19.1)
01B1V0R 43-D	2				1500	1500		2.125 (54.0)	11.25 (285.8)	5.00 (127.0)	4.00 (101.6)	0.50 (12.7)
01B1V0R 44-D	2					1750	1750	2.375 (60.3)	12.25 (311.2)	6.00 (152.4)	4.00 (101.6)	0.75 (19.1)
01B1V0R 45-C	2					2000	2000	2.375 (60.3)	11.18 (284.0)	6.00 (152.4)	3.00 (76.2)	1.00 (25.4)
01B1V0R 46-D	2					2000	2000	2.375 (60.3)	12.38 (314.5)	6.00 (152.4)	4.00 (101.6)	0.70 (17.8)

DRN BY:	DATA
Ella	08/06/17
<small>CONFIDENTIAL THIS DRAWING AND ITS CONTENTS PROPERTY OF TIANJIN TUOFA ELECTRIC POWER TECHNOLOGY CO.,LTD. NO PUBLICATION, DISTRIBUTION OR COPIES MAY BE MADE WITHOUT THE WRITTEN CONSENT OF TIANJIN TUOFA ELECTRIC POWER TECHNOLOGY CO.,LTD. TIANJIN TUOFA ELECTRIC POWER TECHNOLOGY CO.,LTD UNPUBLISHED ALL RIGHTS RESERVED UNDER THE COPYRIGHT LAWS.</small>	

**COPPER COMPRESSION  
TERMINAL**

**TTF POWER TECHNOLOGY CO.**