

CATALOG NUMBER : 05B7Z3P

SPACER BAR PROVIDED TO ASSIST IN POSITIONING CLAMP ON INSULATOR
.62 (15.7mm) DIA

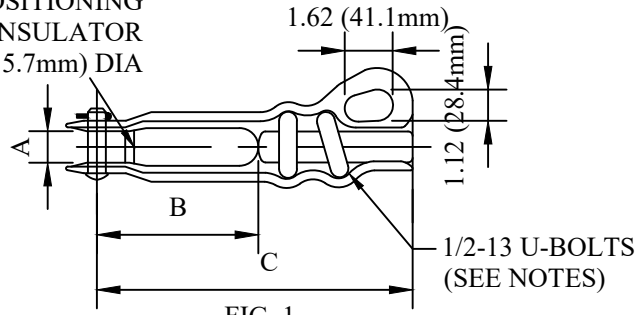
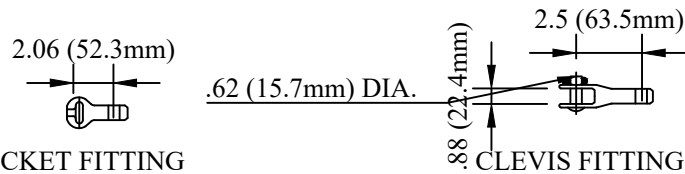


FIG. 1



SOCKET FITTING

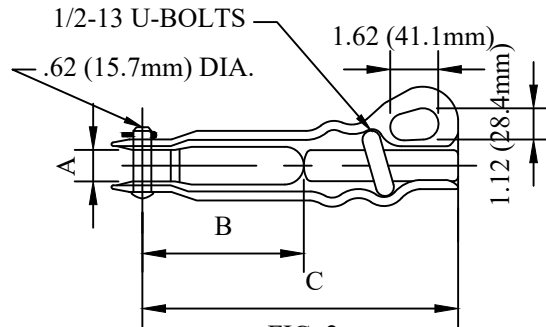
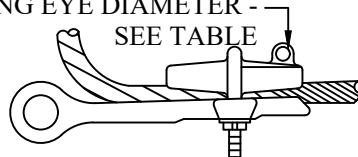


FIG. 2

LIFTING EYE DIAMETER - SEE TABLE



CATALOG NUMBER	DECIMAL RANGE		CONDUCTOR SIZE AWG OR MCM				BODY FIG.	DIMENSIONS IN INCHES			ULTIMATE STRENGTH IN POUNDS		LIFT EYE ID
	MIN.	MAX.	ALUMINUM		ACSR			A	B	C	BODY	SAG. EYE	
			MIN.	MAX.	MIN.	MAX.							
05B7Z3P_1-N	.18	.47	# 6 7 STR	3/0 19 STR	# 6 6/1	101.8 12/7	2	.69	2.12	5.38	7,000	4,000	.750
05B7Z3P_2-N	.18	.502	# 6 7 STR	3/0 19 STR	# 6 6/1	3/0 6/1	1	.69	3.88	7.62	7,000	4,000	.760
05B7Z3P_3-N	.19	.60	# 4 7 STR	266.8 19 STR	# 6 6/1	159.0 12/7	1	.75	4	8.25	8,000	5,000	.660
05B7Z3P_4-N	.31	.88	# 1 7 STR	556.5 37 STR	# 2 6/1	556.5 18/1	1	.94	4.5	9	10,000	6,000	.624
05B7Z3P_5-N	.31	1.16	# 1 7 STR	1000 61 STR	# 2 6/1	954 36/1	1	1	5.5	10.5	15,000	7,000	.760
05B7Z3P_6-N	.72	1.55	397.5 19 STR	1800 127 STR	336.4 26/7	159.0 54/19	1	1	6	11.75	15,000	10,000	.750
05B7Z3P_7-L-N	.18	.47	# 6 7 STR	3/0 19 STR	# 6 6/1	101.8 12/7	2	.69	3.5	6.75	7,000	4,000	.750
05B7Z3P_8-L-N	.19	.60	# 4 7 STR	266.8 19 STR	# 6 6/1	159.0 12/7	1	.75	6	10.62	8,000	5,000	.660
05B7Z3P_9-L-N	.31	.88	# 1 7 STR	556.5 37 STR	# 2 6/1	556.5 18/1	1	.94	7.5	12	10,000	6,000	.624
05B7Z3P_10-N-FPC	.74	1.16	450 19 STR	1000 61 STR	336.4 26/7	954 36/1	1	1	5.5	10.5	15,000	7,000	.760
05B7Z3P_11-N	.64	1.30	336.4 19 STR	1272 61 STR	266.8 26/7	1192.5 45/7	1	1	5.5	10.5	15,000	10,000	.750
05B7Z3P_12-N-L-FW	.19	.60	# 4 7 STR	266.8 19 STR	# 6 6/1	159.0 12/7	1	.75	4	8.25	8,000	5,000	.660
05B7Z3P_13-N-HQ	.19	.60	# 4 7 STR	266.8 19 STR	# 6 6/1	159.0 12/7	1	.75	4	8.25	8,000	5,000	.660
05B7Z3P_14-NNSB	.31	.88	# 1 7 STR	556.5 37 STR	# 2 6/1	556.5 18/1	1	.94	4.5	9	10,000	6,000	.624
05B7Z3P_15-N-HQ	.31	.88	# 1 7 STR	556.5 37 STR	# 2 6/1	556.5 18/1	1	.94	4.5	9	10,000	6,000	.624

NOTES:

1.MATERIAL:

- BODY & KEEPER-356-T6 ALUMINUM ALLOY.
- U-BOLTS & NUTS STEEL-HDG.
- CLEVIS PINS - HDG STEEL.
- COTTER PINS - STAINLESS STEEL.
- CLEVIS OR SOCKET FITTING - DUCTILE IRON HDG.

2.END FITTING MAY BE ORDERED BY SPECIFYING [C] (CLEVIS) OR [S] SOCKET IN CATALOG NUMBER.

3.05B7Z3P_2 HAS 3/8-16 U-BOLTS, 05B7Z3P_6 HAS 5/8-11 U-BOLT.

4.LOCKWASHERS MAY BE MECHANICAL PLATED OR HOT DIP GALVANIZED.

5.05B7Z3P_2 AND 05B7Z3P_4 MAY BE FURNISHED WITH 1/4" LONGER U-BOLTS - ADD SUFFIX NYSEG.

6.05B7Z3P_7-L-N HAS NO SPACER BAR.

7.05B7Z3P_10-N-FPC HAS 4.31 LONG U-BOLTS.

8.FOR USE OF A FLATWASHER INSTEAD OF A LOCKWASHER - ADD SUFFIX FW.

9.TO OBTAIN CLAMP WITH BOTH FLAT AND LOCK WASHERS, ADD SUFFIX LFW AS NOTED.

LOCKWASHER IS ASSEMBLED BETWEEN THE FLAT WASHERS AND HEX NUT. "HQ" SUFFIX ALSO GETS FLAT AND LOCK WASHERS.

10.ALL 05B7Z3P_3 CLAMP BODY U-BOLT HOLES HAVE A 3/16" (.625") DIAMETER AT THE MOLD PARTING LINE (MIN. DIA).

11.ADD SUFFIX "NSB" FOR PARTS WITH "NO SPACER BAR".

12.ALL HARDWARE MUST MEET OR EXCEED CSA G164 FOR PRODUCTS WITH "HQ" SUFFIX.

13.ALL DIMENSIONS ARE FOR REFERENCE ONLY.

DRN BY:	DATA
Ella	08/06/17
<small>CONFIDENTIAL-THIS DRAWING AND ITS CONTENTS PROPERTY OF TIANJIN TUOFA ELECTRIC POWER TECHNOLOGY CO.,LTD. NO PUBLICATION, DISTRIBUTION OR COPIES MAY BE MADE WITHOUT THE WRITTEN CONSENT OF TIANJIN TUOFA ELECTRIC POWER TECHNOLOGY CO.,LTD. TIANJIN TUOFA ELECTRIC POWER TECHNOLOGY CO.,LTD UNPUBLISHED ALL RIGHTS RESERVED UNDER THE COPYRIGHT LAWS.</small>	

ALUMINUM STRAIGHT
LINE DEADEND



TTF POWER TECHNOLOGY CO.