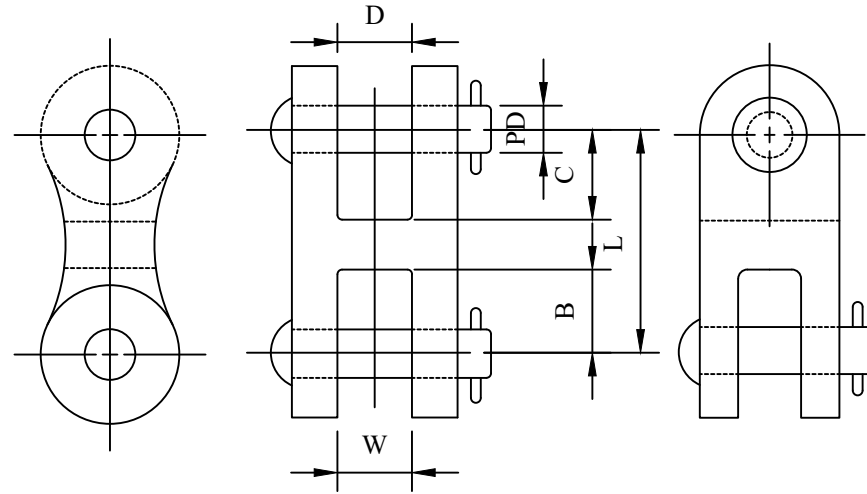


CATALOG NUMBER : 05A8Y6S

NOTES:

1.MATERIAL:

BODY - GALVANIZED DUCTILE IRON
 CLEVIS PIN - GALVANIZED STEEL
 COTTER PIN - STAINLESS STEEL



CATALOG NUMBER	ULTIMATE STRENGTH LB (KN)	DIMENSIONS INCHES (MM)						APPROX WEIGHT EACH LB (KG)
		L	B	C	W	D	PD	
05A8Y6S_1	25,000 (111)	3 (76.2)	1 1/16 (27)	1 1/4 (38.1)	1 1/16 (17.5)	1 1/16 (30.2)	1 1/8 (15.9)	2.5 (1.13)
05A8Y6S_2	30,000 (133)	4 (101.6)	1 1/4 (44.5)	1 1/4 (44.5)	7/8 (22.2)	7/8 (22.2)	1 1/8 (15.9)	2.5 (1.13)
05A8Y6S_3	30,000 (133)	4 (101.6)	2 (50.8)	1 1/4 (38.1)	1 1/16 (30.2)	7/8 (22.2)	1 1/8 (15.9)	3.0 (1.36)
05A8Y6S_4	30,000 (133)	3 (76.2)	1 3/8 (34.9)	1 3/8 (34.9)	7/8 (22.2)	7/8 (22.2)	5/8 (15.9)	2.5 (1.13)
05A8Y6S_5	30,000 (133)	5 1/2 (139.7)	1 3/4 (44.5)	1 3/4 (44.5)	15/16 (23.8)	15/16 (23.8)	5/8 (15.9)	5.7 (2.59)
05A8Y6S_6	40,000 (178)	4 (101.6)	1 3/4 (44.5)	1 3/4 (44.5)	7/8 (22.2)	7/8 (22.2)	3/4 (19.1)	3.2 (1.45)
05A8Y6S_7	40,000 (178)	3 1/2 (88.9)	1 1/2 (38.1)	1 1/2 (38.1)	7/8 (22.2)	7/8 (22.2)	3/4 (19.1)	3.2 (1.45)
05A8Y6S_8	50,000 (222)	4 1/2 (114.3)	2 (50.8)	2 (50.8)	1 (25.4)	1 (25.4)	3/4 (19.1)	4.0 (1.81)
05A8Y6S_9	50,000 (222)	4 1/2 (114.3)	2 (50.8)	2 (50.8)	1 (25.4)	1 (25.4)	3/4 (19.1)	4.0 (1.81)
05A8Y6S_10	80,000 (356)	5 3/4 (130.2)	2 1/4 (57.2)	2 1/4 (57.2)	1 3/8 (41.3)	1 1/4 (31.8)	(1)	6.0 (2.72)

NOTES: BOLT AND NUT MAY BE SUBSTITUTED FOR CLEVIS PIN BY ADDING SUFFIX "BNK" TO CATALOG NUMBER.

(1) FURNISHED WITH BOLT, NUT AND COTTER PIN; 1.0 IN DIAMETER BOLT AT "D" OPENING, 11/8 IN DIAMETER BOLT AT "W" OPENING.

DRN BY:	DATA
Ella	10/10/16

STRAIGHT CLEVIS FITTING

CONFIDENTIAL THIS DRAWING AND ITS CONTENTS PROPERTY OF TIANJIN TUOFA ELECTRIC POWER TECHNOLOGY CO.,LTD. NO PUBLICATION, DISTRIBUTION OR COPIES MAY BE MADE WITHOUT THE WRITTEN CONSENT OF TIANJIN TUOFA ELECTRIC POWER TECHNOLOGY CO.,LTD. TIANJIN TUOFA ELECTRIC POWER TECHNOLOGY CO.,LTD UNPUBLISHED ALL RIGHTS RESERVED UNDER THE COPYRIGHT LAWS.



TTF POWER TECHNOLOGY CO.