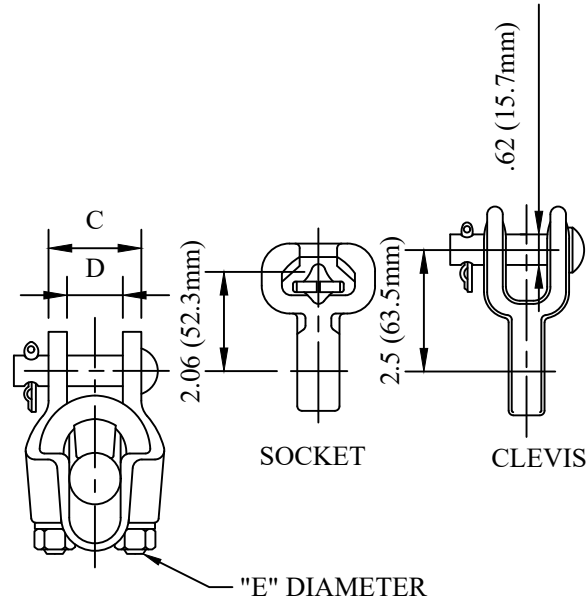
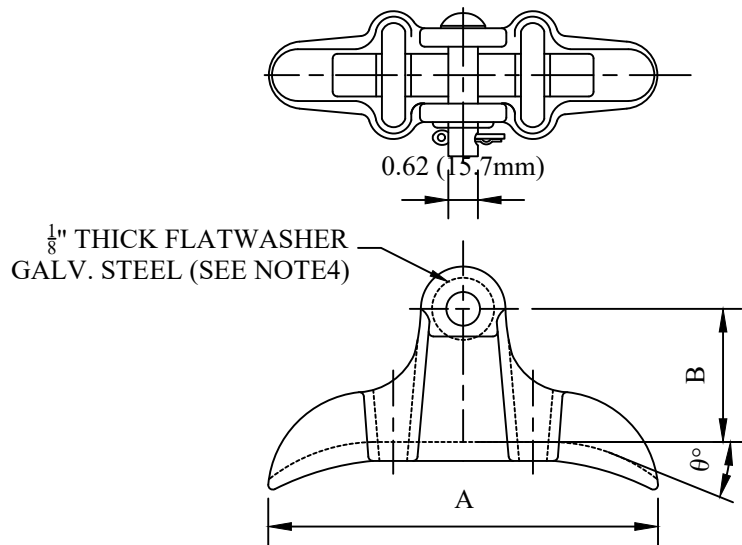


CATALOG NUMBER : 05G8T8N

CATALOG NUMBER	CLAMPING RANGE (IN) (MM)		DIMENSION (IN) (MM)						ULTIMATE STRENGTH
	MIN.	MAX.	A	B	C	D	E	θ°	
05G8T8N_1-N	.18 (4.6)	.38 (9.7)	5.63 (143)	1.88 (47.8)	.88 (22.4)	.5 (12.7)	.5 (12.7)	30	16,000
05G8T8N_2-N	.2 (5.1)	.46 (11.7)	5.63 (143)	2 (50.8)	.88 (22.4)	.5 (12.7)	.5 (12.7)	30	16,000
05G8T8N_3-N	.2 (5.1)	.6 (15.2)	6.44 (163.6)	2 (50.8)	.88 (22.4)	.5 (12.7)	.5 (12.7)	30	16,000
05G8T8N_4-N-BNK-DWP	.2 (5.1)	.6 (15.2)	6.44 (163.6)	2 (50.8)	.88 (22.4)	.5 (12.7)	.5 (12.7)	30	16,000
05G8T8N_5-N	.3 (7.62)	.7 (17.8)	6.38 (162.1)	2 (50.8)	.88 (22.4)	.63 (16)	.5 (12.7)	30	16,000
05G8T8N_6-N	.4 (10.2)	.82 (20.8)	7.5 (190.5)	2.38 (60.5)	0.94 (23.9)	.75 (19.1)	.5 (12.7)	30	16,000
05G8T8N_7-S-BR	.4 (10.2)	.82 (20.8)	7.5 (190.5)	2.38 (60.5)	1.25 (31.8)	1 (25.4)	.5 (12.7)	30	16,000
05G8T8N_8-N	.5 (12.7)	1.04 (26.4)	8 (203.2)	2.75 (69.9)	1.16 (29.5)	1 (25.4)	.5 (12.7)	30	16,000



DIMENSION "D" INDICATES MAX. WIDTH OF FITTING TO BE USED IN CLEVIS OPENING.

NOTE:

- 1.MATERIAL: BODY & RIDER - 654512 DUCTILE IRON (ASTM A536-65T)
HARDWARE - GALVANIZED STEEL
CLEVIS PIN - GALVANIZED STEEL (ASTM A307-65 GRADE B)
COTTER PIN - STAINLESS STEEL - #302
- 2.MAY BE SUPPLIED WITH EITHER CLEVIS OR SOCKET. TO SPECIFY, ADD - "C" OR "S" SUFFIX TO CATALOG NUMBER.
- 3.MAY BE SUPPLIED WITH HEX BOLT, NUT, AND COTTER PIN. TO SPECIFY ADD - "BNK" SUFFIX TO CATALOG NUMBER.
- 4.TO BE SUPPLIED WITH 1/8" THICK GALVANIZED STEEL FLATWASHER UNDER COTTER PIN AND 1" WIDE SOCKET ON 05G8T8N_7-S-BR ONLY.
- 5.GALVANIZED PER ASTM A153-82
- 6.PARTS WITH A - "CVN" SUFFIX ARE PROVIDED WITH A CHARPY LEVEL1 RATED BOLT AND HARDWARE THAT IS GALVANIZED PER CSA G164.

DRN BY:	DATA
Ella	12/12/16
<small>CONFIDENTIAL-THIS DRAWING AND ITS CONTENTS PROPERTY OF TIANJIN TUOFA ELECTRIC POWER TECHNOLOGY CO.,LTD. NO PUBLICATION, DISTRIBUTION OR COPIES MAY BE MADE WITHOUT THE WRITTEN CONSENT OF TIANJIN TUOFA ELECTRIC POWER TECHNOLOGY CO.,LTD. TIANJIN TUOFA ELECTRIC POWER TECHNOLOGY CO.,LTD UNPUBLISHED ALL RIGHTS RESERVED UNDER THE COPYRIGHT LAWS.</small>	

GROUND WIRE SUSPENSION CLAMP



TTF POWER TECHNOLOGY CO.