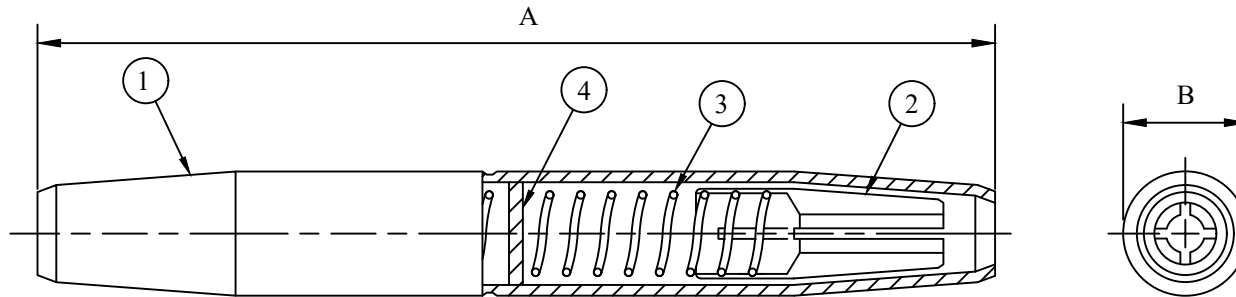


CATALOG NUMBER : 01C5H1H

ITEM	DESCRIPTION	QTY
1	TUBE - COPPER	1
2	CONE - BRONZE ALLOY	2
3	SPRING - STAINLESS STEEL OR GALVANIZED STEEL	2
4	CENTER STOP - STAINLESS STEEL	1

CATALOG NUMBER	CONDUCTOR	APPROXIMATE CONDUCTOR O.D.		SUGGESTED COPPER CONDUCTOR		DIMENSIONS INCHES (MM)		STANDARD PACK
		MIN/MAX (INCHES)	MIN/MAX (MM)	SOLID	STRANDED	A	B	
01C5H1H_1	6 mm <sup>2</sup>	.10 - .14	2.6 - 3.5	-	-	4.20 [107]	.51 [13]	100
01C5H1H_2	10 mm <sup>2</sup>	.14 - .17	3.4 - 4.3	#8 SOL #6 SOL	-	4.20 [107]	.51 [13]	100
01C5H1H_3	16 mm <sup>2</sup> SOL	.17 - .20	4.2 - 5.2	-	-	4.36 [111]	.55 [14]	100
01C5H1H_4	16 mm <sup>2</sup> STR.	.20 - .22	5.0 - 5.8	#4 SOL #3 SOL	#4 7 STR	4.36 [111]	.55 [14]	100
01C5H1H_5	25 mm <sup>2</sup>	.22 - .26	5.8 - 6.6	-	-	5.46 [139]	.71 [18]	100
01C5H1H_6	35 mm <sup>2</sup>	.25 - .30	6.5 - 7.6	#2 SOL #1 SOL 1/0 SOL	#2 7 STR	5.46 [139]	.71 [18]	100
01C5H1H_7	50 mm <sup>2</sup>	.31 - .37	7.9 - 9.4	-	-	6.48 [165]	.90 [23]	100
01C5H1H_8	70 mm <sup>2</sup>	.37 - .43	9.4 - 10.9	2/0 SOL 3/0 SOL	1/0 7 STR 2/0 7 STR	6.48 [165]	.90 [23]	100
01C5H1H_9	95 mm <sup>2</sup>	.44 - .50	11.3 - 12.6	4/0 SOL	3/0 7 STR	7.98 [203]	1.22 [31]	50
01C5H1H_10	120 mm <sup>2</sup>	.50 - .56	12.6 - 14.2	-	4/0 7 STR	7.98 [203]	1.22 [31]	50



NOTES:  
1. ALL DIMENSIONS FOR REFERENCE ONLY IN. [MM].

DRN BY:	DATA
Ella	10/10/16
<small>CONFIDENTIAL THIS DRAWING AND ITS CONTENTS PROPERTY OF TIANJIN TUOFA ELECTRIC POWER TECHNOLOGY CO.,LTD. NO PUBLICATION, DISTRIBUTION OR COPIES MAY BE MADE WITHOUT THE WRITTEN CONSENT OF TIANJIN TUOFA ELECTRIC POWER TECHNOLOGY CO.,LTD. TIANJIN TUOFA ELECTRIC POWER TECHNOLOGY CO.,LTD UNPUBLISHED ALL RIGHTS RESERVED UNDER THE COPYRIGHT LAWS.</small>	

COPPER AUTOMATIC  
SPLICE



TTF POWER TECHNOLOGY CO.