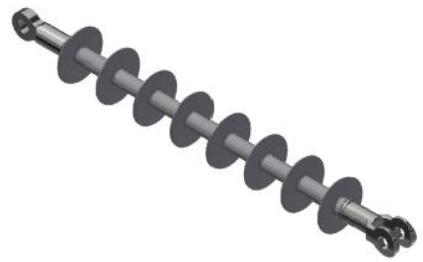
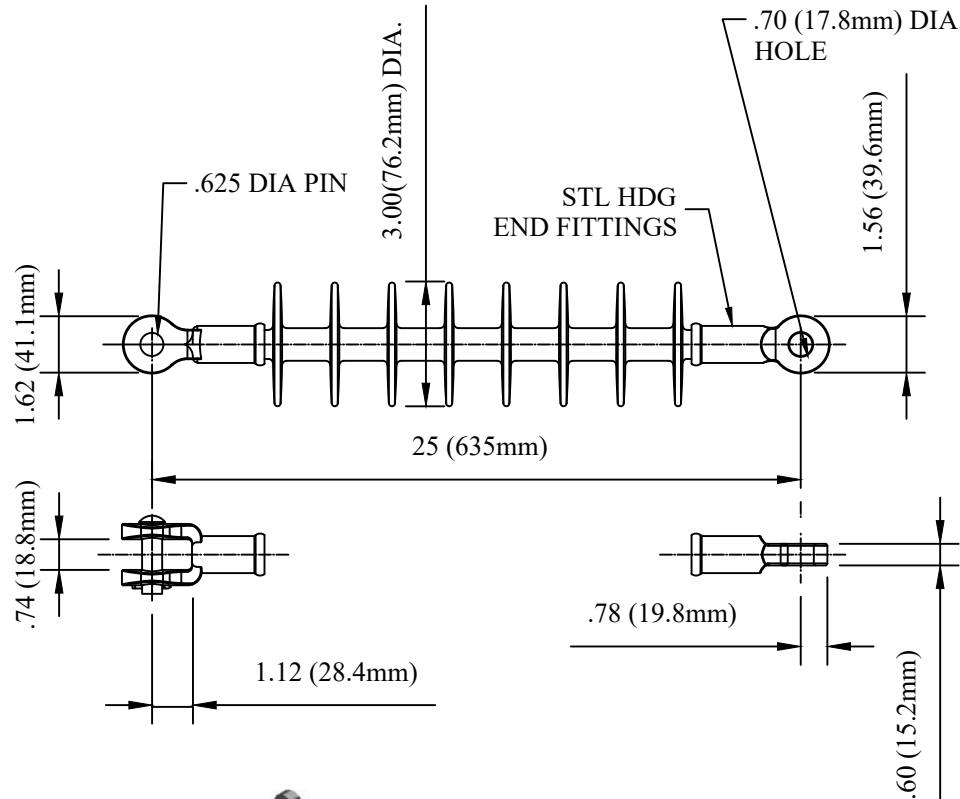


CATALOG NUMBER : 07BXCT6



MECHANICAL VALUES	LBS	KN
TENSILE PROOF TEST	10000	45
ULTIMATE TENSION STRENGTH	15000	70
ELECTRICAL VALUES	KV	KV
60 HZ DRY FLASHOVER (DRY WITHSTAND)	200	(170)
60 HZ DRY FLASHOVER (WET WITHSTAND)	160	(130)
CRITICAL IMPLUSE FLASHOVER + (WITHSTAND)	325	-
CRITICAL IMPLUSE FLASHOVER - (WITHSTAND)	360	-
MAX RIV AT 1000KHZ	<10 μ V	
RIV TEST VOLTAGE	30 KV	
POWER ARC	150KA CYCLES	
DIMENSIONAL VALUES	IN.	MM
SECTION LENGTH	25.0	635.0
SHED DIAMETER	3.0	76.2
SHEATH THICKNESS	≥ 0.12	≥ 3
LEAKAGE DISTANCE	33.0	838.2
DRY ARC DISTANCE	20.0	508.0

OTHER DETAILS	
INSULATOR CLASS	N/A
NO OF WEATHERSHED:	8
WEIGHT:	3.3 LBS
COUNTRY OF ORIGIN:	USA/MEXICO

- NOTES:
- 1.ESP RUBBER SHEATH AND SHEDS.HIGH PRESSURE WASHABLE ESP RUBBER HOUSING
 - 2.ELECTRICAL CHARACTERISTICS IN ACCORDANCE WITH ANSI C29.13,CSA C411.5-10 AND IEC 61109.

DRN BY:	DATA
Ella	10/08/16
<small>CONFIDENTIAL THIS DRAWING AND ITS CONTENTS PROPERTY OF TIANJIN TUOFA ELECTRIC POWER TECHNOLOGY CO.,LTD. NO PUBLICATION, DISTRIBUTION OR COPIES MAY BE MADE WITHOUT THE WRITTEN CONSENT OF TIANJIN TUOFA ELECTRIC POWER TECHNOLOGY CO.,LTD. TIANJIN TUOFA ELECTRIC POWER TECHNOLOGY CO.,LTD UNPUBLISHED ALL RIGHTS RESERVED UNDER THE COPYRIGHT LAWS.</small>	

VERI*LITE PDI DEADEND INSULATOR (ESP)



TTF POWER TECHNOLOGY CO.