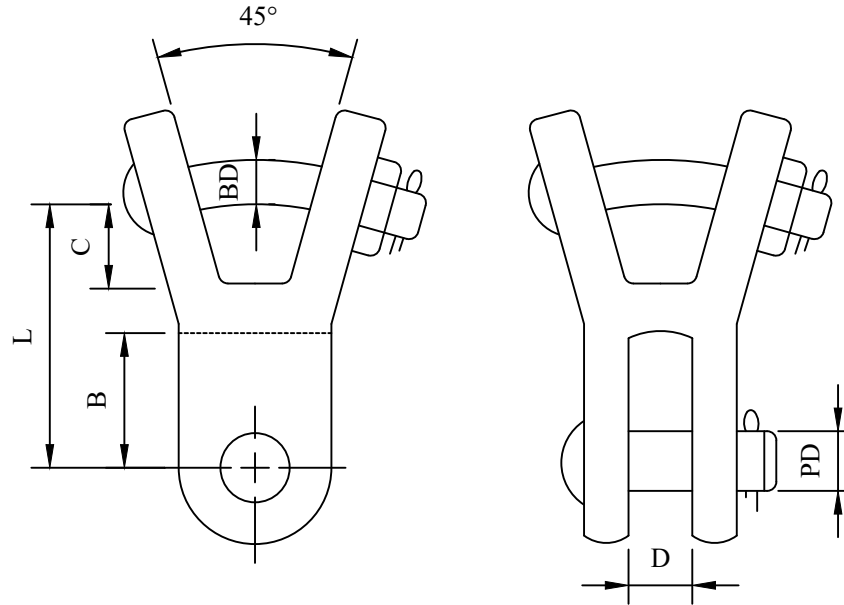


CATALOG NUMBER : 05A9T8N



PRODUCT DATA

CATALOG NUMBER	ULTIMATE STRENGTH LB (KN)	DIMENSIONS INCHES (MM)						APPROX WT EACH LB (KG)
		D	L	B	C	PD	BD	
05A9T8N_1	30,000 (133)	$\frac{7}{8}$ (22.2)	$3\frac{1}{4}$ (82.6)	$1\frac{3}{8}$ (34.9)	$1\frac{3}{8}$ (34.9)	$\frac{5}{8}$ (15.9)	$\frac{3}{4}$ (19.1)	2.5 (1.13)
05A9T8N_2	30,000 (133)	$\frac{7}{8}$ (22.2)	$3\frac{1}{4}$ (82.6)	$1\frac{3}{8}$ (34.9)	$1\frac{1}{2}$ (38.1)	$\frac{5}{8}$ (15.9)	$\frac{3}{4}$ (19.1)	2.5 (1.13)

NOTES:

1.MATERIAL:

BODY - GALVANIZED DUCTILE IRON

HARDWARE - GALVANIZED STEEL

DRN BY:	DATA
Ella	10/10/16
<small>CONFIDENTIAL THIS DRAWING AND ITS CONTENTS PROPERTY OF TIANJIN TUOFA ELECTRIC POWER TECHNOLOGY CO.,LTD. NO PUBLICATION, DISTRIBUTION OR COPIES MAY BE MADE WITHOUT THE WRITTEN CONSENT OF TIANJIN TUOFA ELECTRIC POWER TECHNOLOGY CO.,LTD. TIANJIN TUOFA ELECTRIC POWER TECHNOLOGY CO.,LTD UNPUBLISHED ALL RIGHTS RESERVED UNDER THE COPYRIGHT LAWS.</small>	

Y-CLEVIS EYE,
CLEVIS EYE WIDTH 0.75 IN



TTF POWER TECHNOLOGY CO.