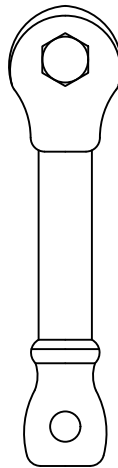
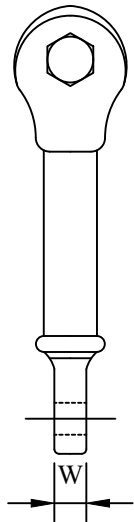
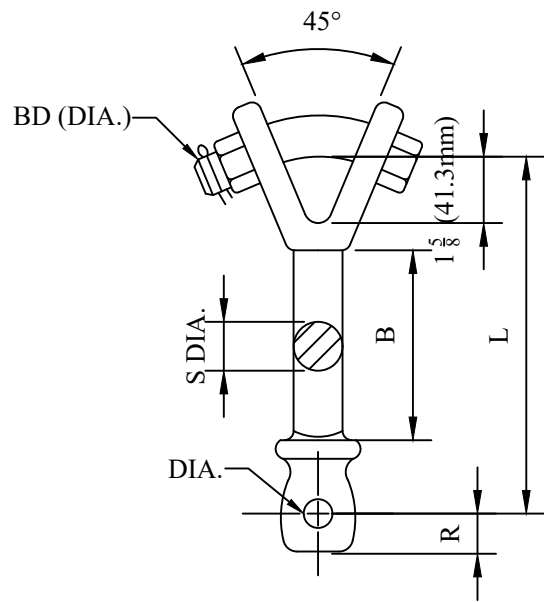


CATALOG NUMBER : 0515S5Y

PRODUCT DATA

CATALOG NUMBER	ULTIMATE STRENGTH LB (KN)	DIMENSIONS INCHES (MM)							APPROX WT EACH LB (KG)
		L	R	S DIAMETER	B	DIAMETER	W	BD	
0515S5Y_1	15,000 (67)	12 (304.8)	$\frac{15}{16}$ (23.8)	$\frac{5}{8}$ (15.9)	$7\frac{3}{8}$ (187.3)	$\frac{11}{16}$ (17.5)	$\frac{1}{2}$ (12.7)	$\frac{3}{4}$ (19.1)	3.4 (1.54)
0515S5Y_1	30,000 (133)	11 (279.4)	$\frac{15}{16}$ (23.8)	$\frac{7}{8}$ (22.2)	$6\frac{3}{8}$ (161.9)	$\frac{11}{16}$ (17.5)	$\frac{5}{16}$ (7.9)	$\frac{3}{4}$ (19.1)	4.2 (1.91)
0515S5Y_1	30,000 (133)	11 (279.4)	$\frac{15}{16}$ (23.8)	$\frac{15}{16}$ (23.8)	$6\frac{3}{8}$ (161.9)	$\frac{11}{16}$ (17.5)	$\frac{5}{16}$ (7.9)	$\frac{3}{4}$ (19.1)	4.57 (2.07)
0515S5Y_1	30,000 (133)	15 (381)	$\frac{15}{16}$ (23.8)	$\frac{15}{16}$ (23.8)	$10\frac{3}{8}$ (263.5)	$\frac{11}{16}$ (17.5)	$\frac{5}{16}$ (7.9)	$\frac{3}{4}$ (19.1)	5.09 (2.31)
0515S5Y_1	40,000 (178)	11 (279.4)	$\frac{11}{32}$ (26.2)	$1\frac{1}{8}$ (28.6)	$6\frac{5}{8}$ (168.3)	$\frac{13}{16}$ (20.6)	$\frac{23}{32}$ (19.8)	$\frac{7}{8}$ (22.2)	4.87 (2.20)



NOTES:

1.MATERIAL:

BODY - GALVANIZED DUCTILE IRON  
 HARDWARE - GALVANIZED STEEL  
 COTTER PIN - STAINLESS STEEL

DRN BY:	DATA
Ella	10/10/16

CONFIDENTIAL THIS DRAWING AND ITS CONTENTS PROPERTY OF TIANJIN TUOFA ELECTRIC POWER TECHNOLOGY CO.,LTD. NO PUBLICATION, DISTRIBUTION OR COPIES MAY BE MADE WITHOUT THE WRITTEN CONSENT OF TIANJIN TUOFA ELECTRIC POWER TECHNOLOGY CO.,LTD. TIANJIN TUOFA ELECTRIC POWER TECHNOLOGY CO.,LTD UNPUBLISHED ALL RIGHTS RESERVED UNDER THE COPYRIGHT LAWS.

Y-CLEVIS EYE



TTF POWER TECHNOLOGY CO.