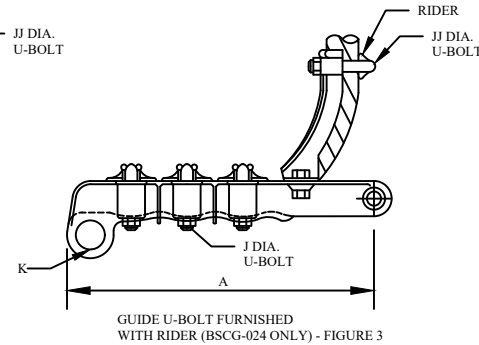
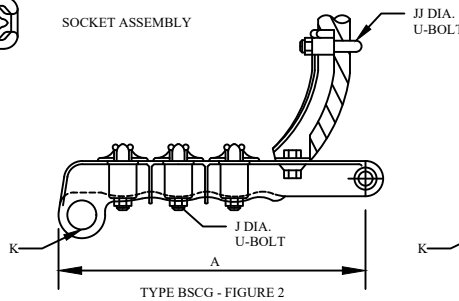
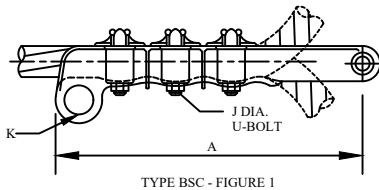
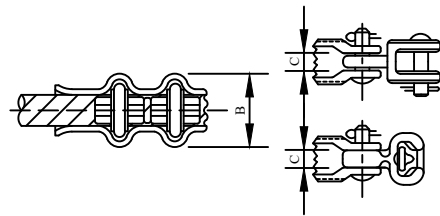
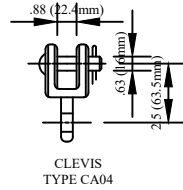
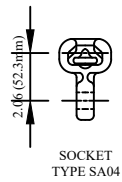


CATALOG NUMBER : 05B4Z5D



NOTES:

1.MATERIAL:

- BODY - HIGH STRENGTH ALUMINUM BRONZE ALLOY
- KEEPER AND GUIDE - ELECTRICAL BRONZE
- SOCKETS AND CLEVISES - DUCTILE IRON, GALVANIZED
- COTTER PIN - #302 STAINLESS STEEL

2.THESE CLAMPS ARE RECOMMENDED FOR COPPER OR COPPERWELD" CONDUCTOR.

3.TYPE BSCG IS SUPPLIED WITH A STAND - OFF GUIDE, ONE U-BOLT & HARDWARE.


- TO ASSURE CLEARANCE BETWEEN CONDUCTOR AND INSULATOR DISC WHEN CLAMPS ARE USED AS A THROUGH TYPE DEADEND OR STRAIN. FOR 05B4Z5D_10, SEE FIGURE 3.

4.DIMENSIONS ARE SHOWN FOR REFERENCE ONLY.

TYPE BSC - (WITHOUT GUIDE)													
CATALOG NUMBER	FITTING		CABLE RANGE	MINIMUM CABLE DIA.	MAXIMUM CABLE DIA.	A	B	C	J	JJ	K DIA.	NO. OF U-BOLTS	ULTIMATE STRENGTH IN POUNDS
	TYPE	CAT. NO.											
05B4Z5D_1	NONE	-	#2 SOL. - 4/0 STR.	.258 (6.6)	.528 (13.4)	9.125 (231.8)	2.50 (63.5)	.688 (17.5)	.500 (12.7)	-	1.25 (31.8)	2	8,000
05B4Z5D_2	SOCKET	SA04											
05B4Z5D_3	CLEVIS	CA04											
05B4Z5D_4	NONE	-	4/0 STR. - 500 MCM	.520 (13.2)	.875 (22.2)	9.625 (244.5)	2.75 (69.9)	.688 (17.5)	.500 (12.7)	-	1.25 (31.8)	2	8,000
05B4Z5D_5	SOCKET	SA04											
05B4Z5D_6	CLEVIS	CA04											
05B4Z5D_7	NONE	-	500 MCM - 1000 MCM	.810 (20.6)	1.250 (31.8)	13.125 (333.4)	3.125 (79.4)	.813 (20.7)	.500 (12.7)	-	1.25 (31.8)	3	10,000
05B4Z5D_8	SOCKET	SA05											
05B4Z5D_9	CLEVIS	CA04											
TYPE BSCG - (WITH GUIDE)													
05B4Z5D_10	NONE	-	#2 SOL. - 4/0 STR.	.258 (6.6)	.528 (13.4)	9.125 (231.8)	2.50 (63.5)	.688 (17.5)	.500 (12.7)	.375 (9.5)	1.25 (31.8)	2	8,000
05B4Z5D_11	SOCKET	SA04											
05B4Z5D_12	CLEVIS	CA04											
05B4Z5D_13	NONE	-	4/0 STR. - 500 MCM	.520 (13.2)	.875 (22.2)	9.625 (244.5)	2.75 (69.9)	.688 (17.5)	.500 (12.7)	.375 (9.5)	1.25 (31.8)	2	8,000
05B4Z5D_14	SOCKET	SA04											
05B4Z5D_15	CLEVIS	CA04											
05B4Z5D_16	NONE	-	500 MCM - 1000 MCM	.810 (20.6)	1.250 (31.8)	13.125 (333.4)	3.125 (79.4)	.813 (20.7)	.500 (12.7)	.500 (12.7)	1.25 (31.8)	3	10,000
05B4Z5D_17	SOCKET	SA05											
05B4Z5D_18	CLEVIS	CA04											

DRN BY:	DATA
Ella	10/10/16
<small>CONFIDENTIAL THIS DRAWING AND ITS CONTENTS PROPERTY OF TIANJIN TUOFA ELECTRIC POWER TECHNOLOGY CO.,LTD. NO PUBLICATION, DISTRIBUTION OR COPIES MAY BE MADE WITHOUT THE WRITTEN CONSENT OF TIANJIN TUOFA ELECTRIC POWER TECHNOLOGY CO.,LTD. TIANJIN TUOFA ELECTRIC POWER TECHNOLOGY CO.,LTD UNPUBLISHED ALL RIGHTS RESERVED UNDER THE COPYRIGHT LAWS.</small>	

STRAIGHT LINE DEADEND



TTF POWER TECHNOLOGY CO.