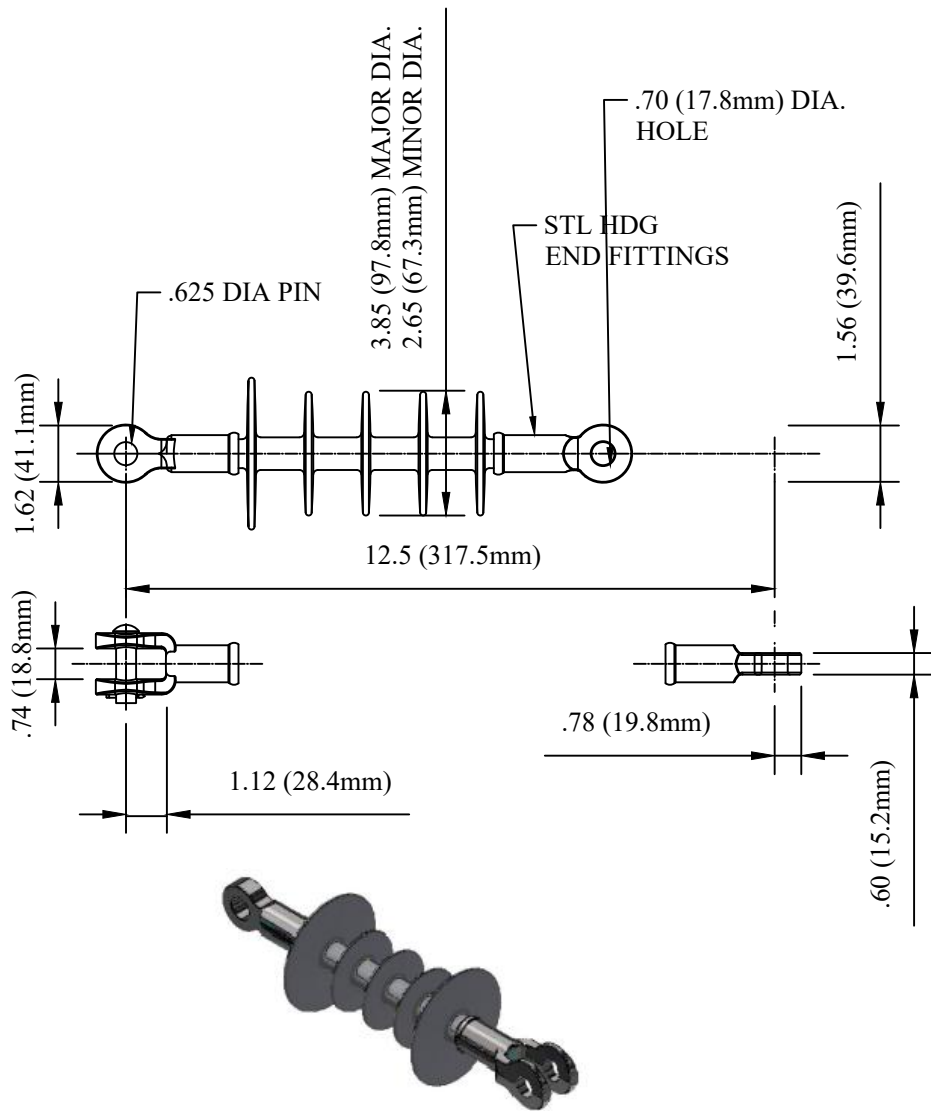


CATALOG NUMBER : 07B4H3D



| MECHANICAL VALUES | | LBS | KN |
|--|--|--------------|------|
| TENSILE PROOF TEST | | 10000 | 45 |
| ULTIMATE TENSION STRENGTH | | 15000 | 70 |
| ELECTRICAL VALUES | | KV | KV |
| 60 HZ DRY FLASHOVER (DRY WITHSTAND) | | 100 | (90) |
| 60 HZ DRY FLASHOVER (WET WITHSTAND) | | 80 | (70) |
| CRITICAL IMPLUSE FLASHOVER + (WITHSTAND) | | 150 | - |
| CRITICAL IMPLUSE FLASHOVER - (WITHSTAND) | | 170 | - |
| MAX RIV AT 1000KHZ | | <10 μ V | |
| RIV TEST VOLTAGE | | 15 KV | |
| POWER ARC | | 150KA CYCLES | |


| DIMENSIONAL VALUES | | IN. | MM |
|---------------------|--|-------------|----------|
| SECTION LENGTH | | 12.5 | 317.5 |
| MAJOR SHED DIAMETER | | 3.85 | 97.79 |
| MINOR SHED DIAMETER | | 2.65 | 67.31 |
| SHEATH THICKNESS | | ≥ 0.12 | ≥ 3 |
| LEAKAGE DISTANCE | | 16.0 | 406.4 |
| DRY ARC DISTANCE | | 8.1 | 215.0 |

| OTHER DETAILS | |
|--------------------|---------|
| INSULATOR CLASS | DS-15 |
| NO OF WEATHERSHED: | 5 |
| WEIGHT: | 2.4 LBS |
| COUNTRY OF ORIGIN: | USA |

- NOTES:
- 1.SILICON RUBBER SHEATH AND SHEDS.HIGH PRESSURE WASHABLE SILICON RUBBER HOUSING
 - 2.ELECTRICAL CHARACTERISTICS IN ACCORDANCE WITH ANSI C29.13,CSA C411.5-10 AND IEC 61109.

| | |
|---|----------|
| DRN BY: | DATA |
| Ella | 07/09/16 |
| <small>CONFIDENTIAL THIS DRAWING AND ITS CONTENTS PROPERTY OF TIANJIN TUOFA ELECTRIC POWER TECHNOLOGY CO.,LTD. NO PUBLICATION, DISTRIBUTION OR COPIES MAY BE MADE WITHOUT THE WRITTEN CONSENT OF TIANJIN TUOFA ELECTRIC POWER TECHNOLOGY CO.,LTD. TIANJIN TUOFA ELECTRIC POWER TECHNOLOGY CO.,LTD UNPUBLISHED ALL RIGHTS RESERVED UNDER THE COPYRIGHT LAWS.</small> | |

SILICONE POLYMER DEADEND INSULATOR, 2.37 LB



TTF POWER TECHNOLOGY CO.