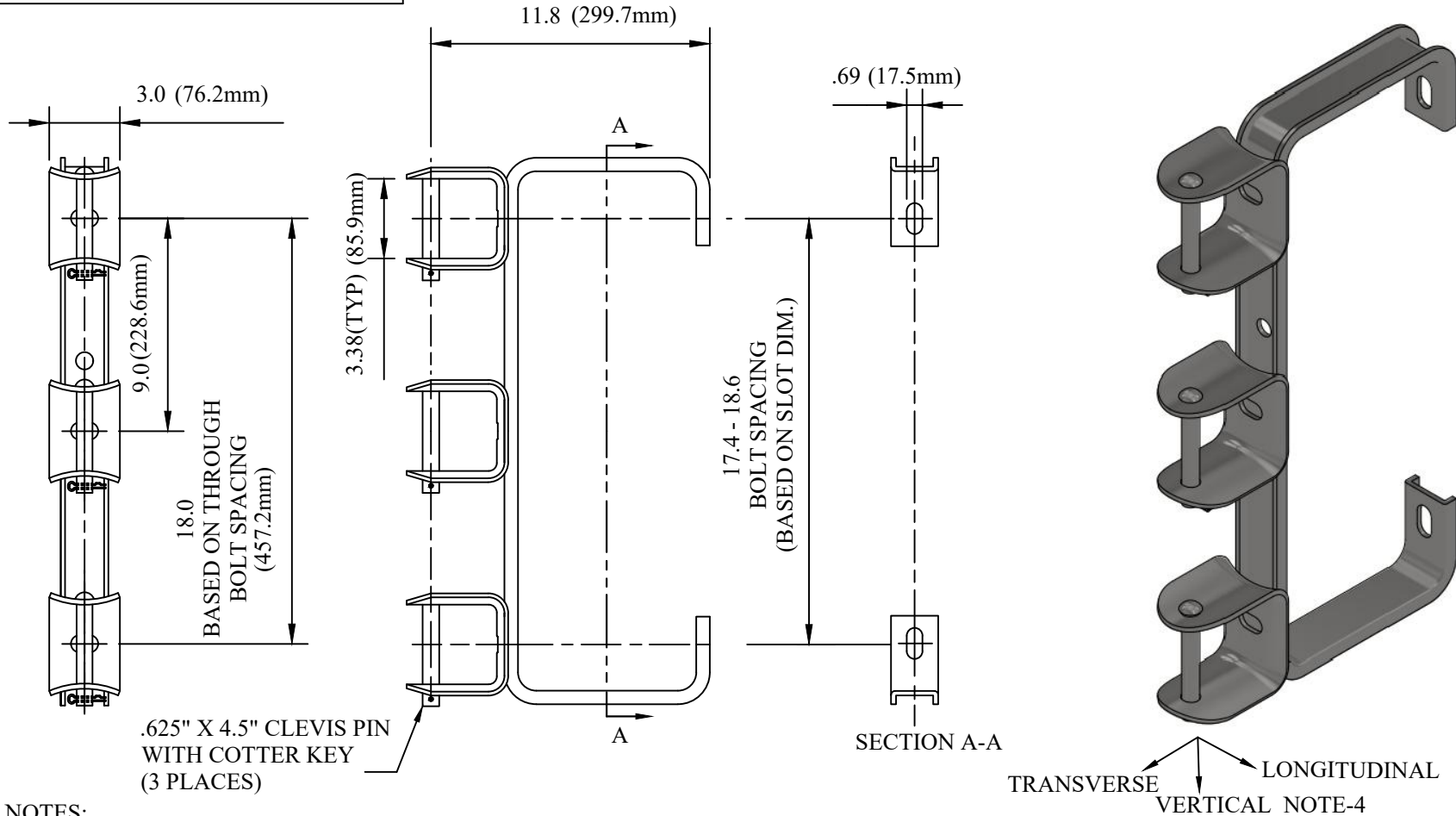


CATALOG NUMBER : 06O1W2F



NOTES:

1. ASSEMBLED COMPLETE AS SHOWN.
2. MATERIAL: STRUCTURAL GRADE CHANNEL 2" X 9/16" X 3/16 "
3. FINISH: HOT DIP GALVANIZE PER ASTM A153(LATEST REV.)
4. MAXIMUM LOAD RATING AS FOLLOWS:
  - TRANSVERSE: 3000 LBS (1000 LBS PER CLEVIS)
  - LONGITUDINAL: 650 LBS
  - VERTICAL: 750 LBS

DRN BY:	DATA
Ella	07/09/16
<small>CONFIDENTIAL-THIS DRAWING AND ITS CONTENTS PROPERTY OF TIANJIN TUOFA ELECTRIC POWER TECHNOLOGY CO.,LTD. NO PUBLICATION, DISTRIBUTION OR COPIES MAY BE MADE WITHOUT THE WRITTEN CONSENT OF TIANJIN TUOFA ELECTRIC POWER TECHNOLOGY CO.,LTD. TIANJIN TUOFA ELECTRIC POWER TECHNOLOGY CO.,LTD UNPUBLISHED ALL RIGHTS RESERVED UNDER THE COPYRIGHT LAWS.</small>	

GALVANIZED STEEL SECONDARY BRACKET WITH 11-3/4 IN OFFSET



TTF POWER TECHNOLOGY CO.