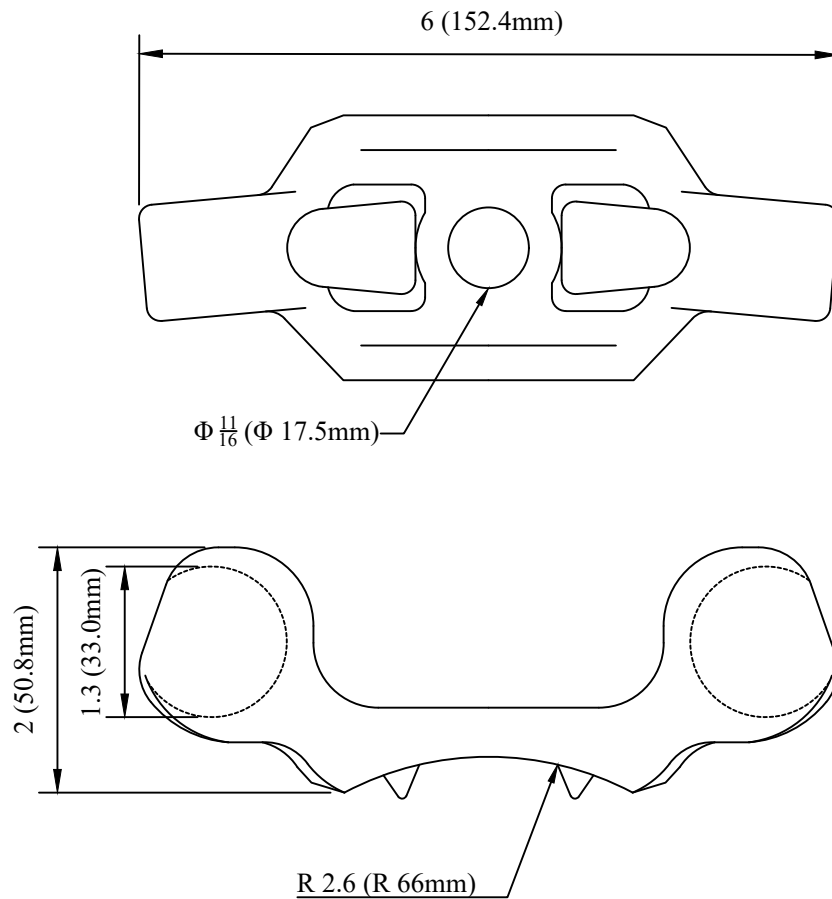



CATALOG NUMBER : 06K0H1J



NOTES:

1. INTEGRAL THIMBLE EYE POLE ATTACHMENT FOR DEAD ENDING STRAND GUY GRIPS AT ANGLES OF 35° TO 60°.
2. POLE MOUNTING SURFACE IS CURVED WITH INTEGRAL SPURS FOR STABILITY DURING MOUNTING AND LIFE OF INSTALLATION.
3. ACCOMODATES MAXIMUM  $\frac{1}{2}$ " DIAMETER STRAND / GUY GRIPS.
4. DUCTILE IRON PER ASTM A536, GALVANIZED PER ASTM A153.

DRN BY:	DATA	CORNER ATTACHMENT BRACKET
Ella	07/09/16	
<small>CONFIDENTIAL THIS DRAWING AND ITS CONTENTS PROPERTY OF TIANJIN TUOFA ELECTRIC POWER TECHNOLOGY CO.,LTD. NO PUBLICATION, DISTRIBUTION OR COPIES MAY BE MADE WITHOUT THE WRITTEN CONSENT OF TIANJIN TUOFA ELECTRIC POWER TECHNOLOGY CO.,LTD. TIANJIN TUOFA ELECTRIC POWER TECHNOLOGY CO.,LTD UNPUBLISHED ALL RIGHTS RESERVED UNDER THE COPYRIGHT LAWS.</small>		 TTF POWER TECHNOLOGY CO.