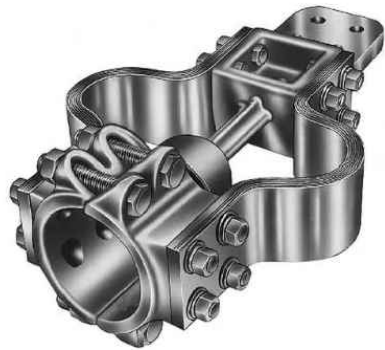


CATALOG NUMBER : 01B8W2U



NOTES:
1.MATERIAL: COPPER ALI

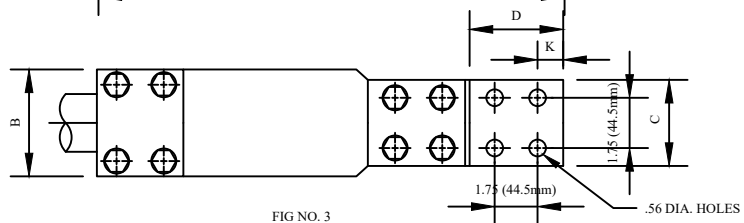
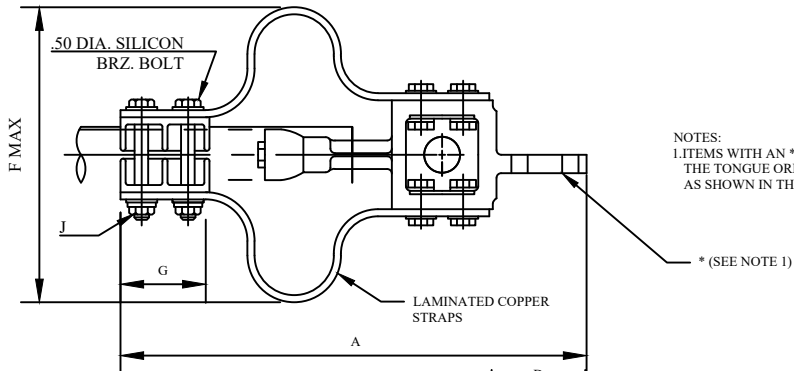


FIG NO. 3

NOTES:
1.ITEMS WITH AN * HAVE THE TONGUE ORIENTATED AS SHOWN IN THIS VIEW.

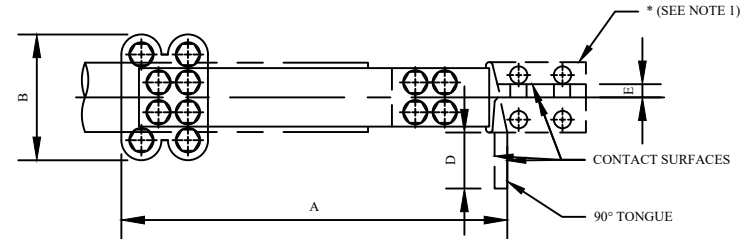
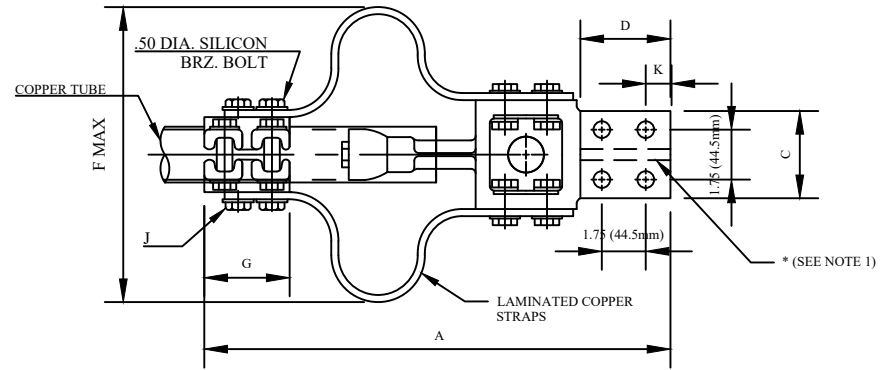


FIG NO. 2

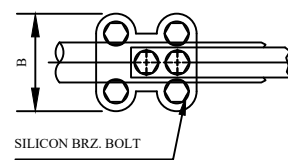
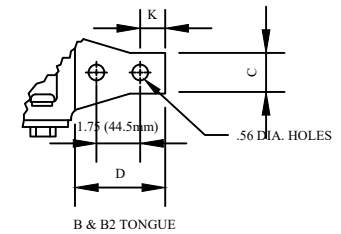


FIG NO. 1



DRN BY:	DATA
Ella	10/10/16
<small>CONFIDENTIAL THIS DRAWING AND ITS CONTENTS PROPERTY OF TIANJIN TUOFA ELECTRIC POWER TECHNOLOGY CO.,LTD. NO PUBLICATION, DISTRIBUTION OR COPIES MAY BE MADE WITHOUT THE WRITTEN CONSENT OF TIANJIN TUOFA ELECTRIC POWER TECHNOLOGY CO.,LTD. TIANJIN TUOFA ELECTRIC POWER TECHNOLOGY CO.,LTD UNPUBLISHED ALL RIGHTS RESERVED UNDER THE COPYRIGHT LAWS.</small>	

BOLTED TERMINAL



TTF POWER TECHNOLOGY CO.

CATALOG NUMBER : 01B8W2U

CATALOG NUMBER	FIG #	I.P.S. SIZE	DIMENSIONS IN INCHES								
			G	B	C	D	E	F	J	K	A
01B8W2U_1	1	1	3.00	3.18	2.00	3.25	0.44	7.50	0.50	0.63	16.00
01B8W2U_2	1	1	2.75	3.25	1.50	3.25	0.44	7.50	0.50	0.63	16.00
01B8W2U_3	3	1	3.00	3.18	3.00	3.25	0.44	7.25	0.50	0.63	16.00
01B8W2U_4	2	1	2.75	3.25	4.00	4.25	0.38	7.50	0.50	1.13	16.00
01B8W2U_5	2	1-1/4	3.00	3.38	2.00	3.25	0.44	8.75	0.50	0.63	15.88
01B8W2U_6	3	1-1/4	3.00	3.38	3.00	3.25	0.38	8.75	0.50	0.63	15.88
01B8W2U_7	1	1-1/2	3.00	3.68	2.00	3.25	0.44	9.62	0.50	0.63	16.00
01B8W2U_8	2	1-1/2	3.00	3.68	2.00	3.13	0.44	9.63	0.50	0.63	13.56
01B8W2U_9	1	1-1/2	3.25	3.81	1.50	3.25	0.44	8.50	0.50	0.63	16.00
01B8W2U_10*	3	1-1/2	3.25	3.81	3.00	3.25	0.63	8.50	0.50	0.63	16.00
01B8W2U_11	2	1-1/2	3.00	3.68	3.00	3.25	0.63	10.00	0.50	0.63	13.75
01B8W2U_12	2	1-1/2	3.25	3.81	4.00	4.25	0.38	8.50	0.50	1.13	16.00
01B8W2U_13	1	2	3.50	4.31	2.00	3.25	0.44	9.50	0.50	0.63	16.25
01B8W2U_14*	2	2	3.00	4.50	3.00	3.13	0.63	9.50	0.50	0.63	16.25
01B8W2U_15*	3	2	3.00	4.50	3.00	3.13	0.63	9.50	0.50	0.63	16.25
01B8W2U_16	2	2	3.50	4.31	4.00	4.25	0.38	9.50	0.50	1.13	16.00
01B8W2U_17	1	2-1/2	3.75	4.81	2.00	3.25	0.56	9.50	0.50	0.63	16.00
01B8W2U_18	2	2-1/2	3.75	4.81	3.00	3.25	0.56	9.50	0.50	0.63	16.00
01B8W2U_19	2	2-1/2	3.00	4.75	4.00	4.25	0.50	9.50	0.50	1.13	16.00
01B8W2U_20	2	3	4.00	5.81	3.00	3.25	0.63	10.00	0.63	0.63	17.00
01B8W2U_21	2	3	4.00	5.81	4.00	4.25	0.63	10.00	0.63	1.13	17.00
01B8W2U_22	2	3-1/2	4.25	6.31	3.00	3.25	0.75	11.00	0.63	0.63	18.00
01B8W2U_23	2	3-1/2	3.50	6.31	4.00	4.25	0.75	11.00	0.63	1.13	18.00
01B8W2U_24	2	4	4.00	6.68	3.00	3.25	0.75	12.00	0.63	0.63	18.00
01B8W2U_25	2	4	4.00	6.68	4.00	4.25	0.75	12.00	0.63	1.13	18.00
01B8W2U_26*	3	1-1/2 EHIPS	3.00	3.68	3.00	3.13	0.63	10.25	0.50	0.63	16.12

DRN BY:	DATA
Ella	10/10/16
<small>CONFIDENTIAL THIS DRAWING AND ITS CONTENTS PROPERTY OF TIANJIN TUOFA ELECTRIC POWER TECHNOLOGY CO.,LTD. NO PUBLICATION, DISTRIBUTION OR COPIES MAY BE MADE WITHOUT THE WRITTEN CONSENT OF TIANJIN TUOFA ELECTRIC POWER TECHNOLOGY CO.,LTD. TIANJIN TUOFA ELECTRIC POWER TECHNOLOGY CO.,LTD UNPUBLISHED ALL RIGHTS RESERVED UNDER THE COPYRIGHT LAWS.</small>	

BOLTED TERMINAL



TTF POWER TECHNOLOGY CO.