

CATALOG NUMBER : 01B7K0T

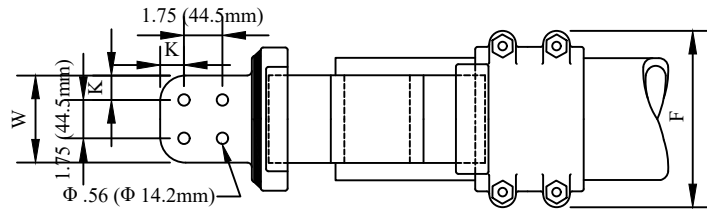
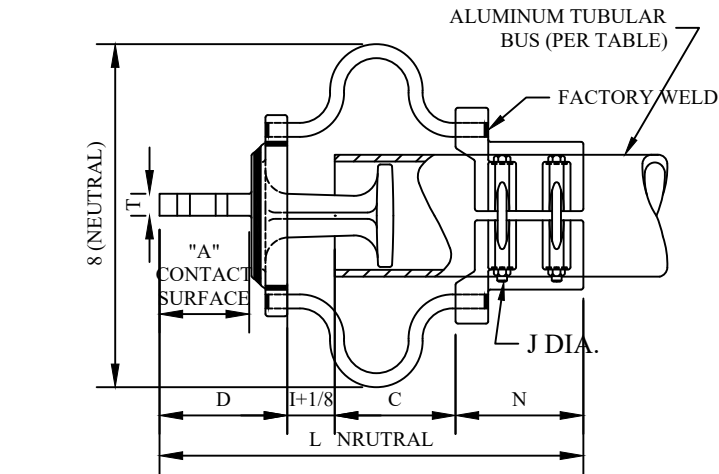


FIG # 1

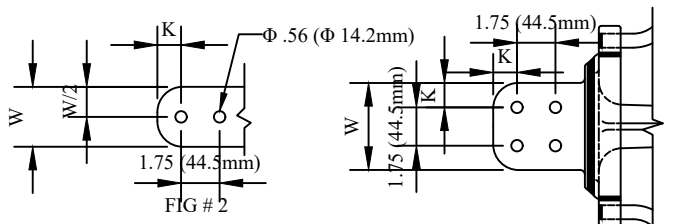


FIG # 2

NOTES:

1.MATERIAL:

CASTINGS - 356 - T6 ALUMINUM ALLOY

SHUNTS - 1100 - 0 ALUMINUM ALLOY

CLAMPING HARDWARE - ALUMINUM ALLOY

2.MAXIMUM BUS LENGTH IS 140 FT.

CATALOG NUMBER	FIG. NO.	IPS SIZE	DIMENSIONS IN INCHES										
			A	B	C	D	F	J	K	L	N	T	W
01B7K0T_1	2	1.000	3.250	10.250	4.750	4.500	3.250	0.500	0.625	15.000	3.625	0.750	2.000
01B7K0T_2	1	1.000	3.250	10.000	4.750	4.750	3.250	0.500	0.625	15.250	3.625	0.625	3.000
01B7K0T_3	2	1.250	3.125	10.250	4.750	5.000	3.625	0.500	0.625	15.625	3.750	0.375	2.000
01B7K0T_4	1	1.250	3.125	10.250	4.750	5.000	3.625	0.500	0.625	15.625	3.750	0.375	3.000
01B7K0T_5	2	1.500	3.125	11.000	4.875	5.000	3.812	0.500	0.625	16.000	4.000	0.500	2.000
01B7K0T_6	1	1.500	3.125	11.000	4.875	5.000	3.812	0.500	0.625	16.000	4.000	0.500	3.000
01B7K0T_7	2	2.000	3.125	11.000	4.750	5.000	4.313	0.500	0.625	16.063	4.188	0.500	2.000
01B7K0T_8	1	2.000	3.125	11.000	4.750	5.000	4.313	0.500	0.625	16.063	4.188	0.500	3.000
01B7K0T_9	2	2.500	3.125	11.500	4.625	5.000	5.188	0.625	0.625	16.500	4.500	0.625	2.000
01B7K0T_10	1	2.500	3.125	11.620	4.688	5.000	5.188	0.625	0.625	16.250	4.500	0.625	3.000
01B7K0T_11	1	2.500	4.125	11.500	4.625	6.000	5.188	0.625	1.125	17.500	4.500	0.500	1.000
01B7K0T_12	2	3.000	3.125	12.875	5.125	5.000	5.812	0.625	0.625	16.938	4.688	0.750	2.000
01B7K0T_13	1	3.000	3.125	12.875	5.125	5.000	5.812	0.625	0.625	16.938	4.688	0.750	3.000
01B7K0T_14	1	3.000	4.125	12.875	5.125	6.000	5.812	0.625	1.125	17.938	4.688	0.625	4.000
01B7K0T_15	2	3.500	3.125	13.000	4.875	5.000	6.313	0.625	0.625	16.875	4.875	0.750	2.000
01B7K0T_16	1	3.500	3.125	13.000	4.875	5.000	6.313	0.625	0.625	16.875	4.875	0.750	3.000
01B7K0T_17	1	3.500	4.125	13.000	4.875	6.000	6.313	0.625	1.125	17.875	4.875	0.750	4.000
01B7K0T_18	2	4.000	3.125	14.000	5.125	5.000	6.938	0.625	0.625	17.125	4.875	0.875	2.000
01B7K0T_19	1	4.000	3.125	14.000	5.125	5.000	6.938	0.625	1.125	17.125	4.875	0.875	3.000
01B7K0T_20	1	4.000	4.125	14.000	5.125	6.000	6.938	0.625	1.125	18.125	4.875	0.875	4.000
01B7K0T_21	1	5.000	4.125	15.500	5.375	6.000	7.938	0.625	1.125	19.375	5.875	1.000	4.000
01B7K0T_22	1	6.000	4.125	17.500	5.375	6.000	9.063	0.625	1.125	20.625	6.875	1.000	4.000

DRN BY: DATA

Ella 07/09/16

CONFIDENTIAL THIS DRAWING AND ITS CONTENTS PROPERTY OF TIANJIN TUOFA ELECTRIC POWER TECHNOLOGY CO.,LTD. NO PUBLICATION, DISTRIBUTION OR COPIES MAY BE MADE WITHOUT THE WRITTEN CONSENT OF TIANJIN TUOFA ELECTRIC POWER TECHNOLOGY CO.,LTD. TIANJIN TUOFA ELECTRIC POWER TECHNOLOGY CO.,LTD UNPUBLISHED ALL RIGHTS RESERVED UNDER THE COPYRIGHT LAWS.

BOLT TERNINAL,
2.94 LB



TTF POWER TECHNOLOGY CO.