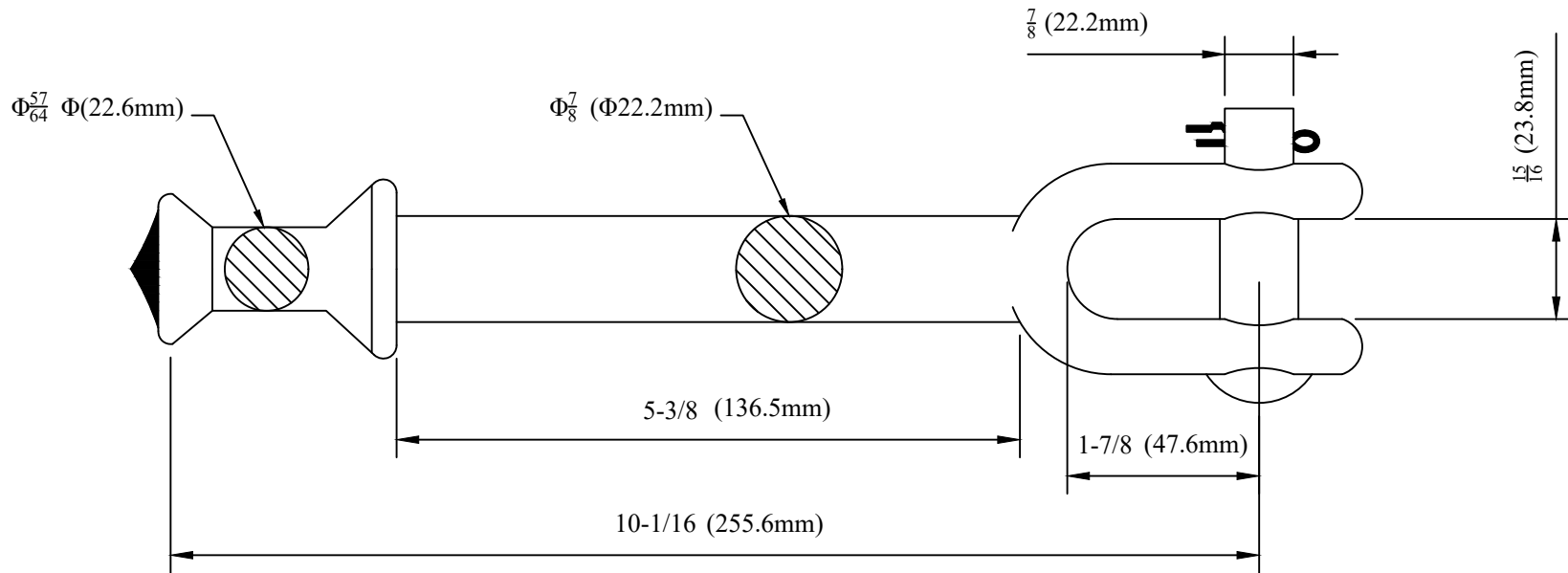


CATALOG NUMBER : 05I4R5L



HOT LINE BALL CLEVISES ARE USED TO ATTACH BALL AND SOCKET INSULATORS TO OTHER ASSOCIATED HARDWARE WITHIN AN INSULATOR STRING. SHOULDERS ARE PROVIDED TO ACCOMMODATE HOT LINE TOOLS.

NOTES:

1.MATERIAL:

- BODY – GALVANIZED STEEL
- CLEVIS PIN – GALVANIZED STEEL
- COTTER PIN – STAINLESS STEEL

2.FOR USE WITH CLASS 52-8 AND 52-11 INSULATORS PER ANSI SPEC. C-29.2-71.

DRN BY:	DATA
Ella	07/09/16
<small>CONFIDENTIAL THIS DRAWING AND ITS CONTENTS PROPERTY OF TIANJIN TUOFA ELECTRIC POWER TECHNOLOGY CO.,LTD. NO PUBLICATION, DISTRIBUTION OR COPIES MAY BE MADE WITHOUT THE WRITTEN CONSENT OF TIANJIN TUOFA ELECTRIC POWER TECHNOLOGY CO.,LTD. TIANJIN TUOFA ELECTRIC POWER TECHNOLOGY CO.,LTD UNPUBLISHED ALL RIGHTS RESERVED UNDER THE COPYRIGHT LAWS.</small>	

**STEEL HOT LINE LINK, CLEVIS BALL,
WEIGHT 2.205 LB**



TTF POWER TECHNOLOGY CO.