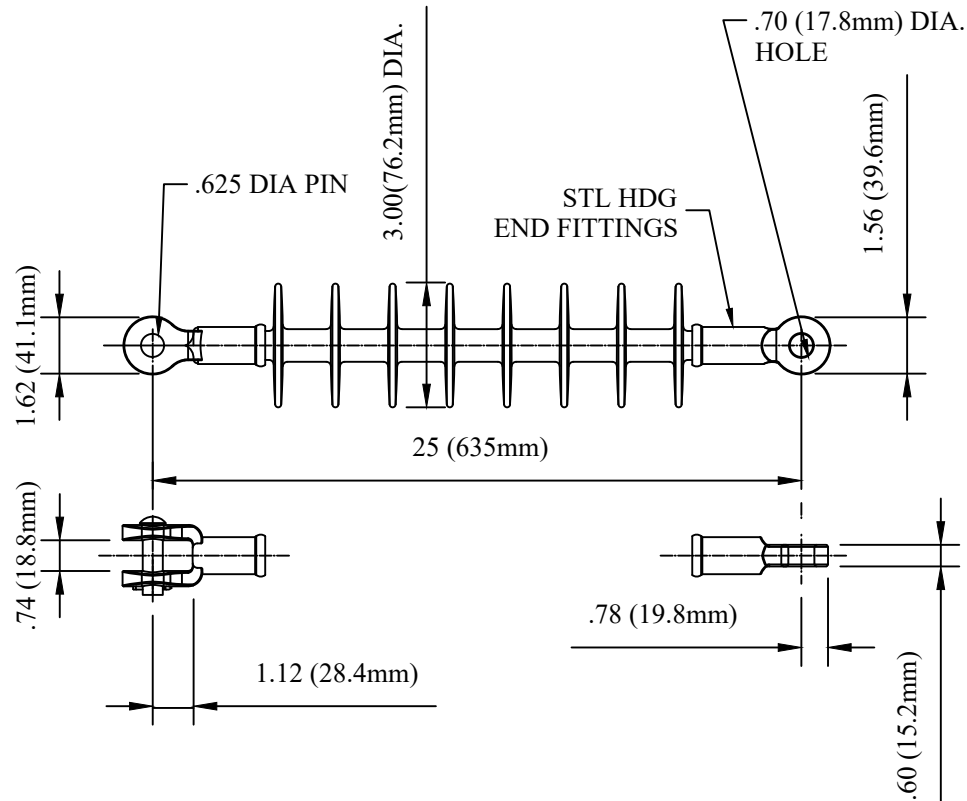


CATALOG NUMBER : 07B2H2S



MECHANICAL VALUES
 TENSILE PROOF TEST 10000
 ULTIMATE TENSION STRENGTH 15000

LBS	KN
10000	45
15000	70

ELECTRICAL VALUES
 60 HZ DRY FLASHOVER (DRY WITHSTAND) 200 (170)
 60 HZ DRY FLASHOVER (WET WITHSTAND) 160 (130)
 CRITICAL IMPLUSE FLASHOVER + (WITHSTAND) 325 -
 CRITICAL IMPLUSE FLASHOVER - (WITHSTAND) 360 -
 MAX RIV AT 1000KHZ <10 μV
 RIV TEST VOLTAGE 30 KV
 POWER ARC 150KA CYCLES

KV	KV
200	(170)
160	(130)
325	-
360	-
	<10 μV
	30 KV
	150KA CYCLES

DIMENSIONAL VALUES
 SECTION LENGTH 25.0
 SHED DIAMETER 3.0
 SHEATH THICKNESS ≥0.12
 LEAKAGE DISTANCE 33.0
 DRY ARC DISTANCE 20.0


IN.	MM
25.0	635.0
3.0	76.2
≥0.12	≥3
33.0	838.2
20.0	508.0

OTHER DETAILS

INSULATOR CLASS N/A
 NO OF WEATHERSHED: 8
 WEIGHT: 3.3 LBS
 COUNTRY OF ORIGIN: USA/MEXICO

NOTES:

- 1.ESP RUBBER SHEATH AND SHEDS.HIGH PRESSURE WASHABLE ESP RUBBER HOUSING
- 2.ELECTRICAL CHARACTERISTICS IN ACCORDANCE WITH ANSI C29.13,CSA C411.5-10 AND IEC 61109.

DRN BY:	DATA	SILICONE POLYMER DEADEND, 15,000 LB
Ella	07/09/16	
<small>CONFIDENTIAL THIS DRAWING AND ITS CONTENTS PROPERTY OF TIANJIN TUOFA ELECTRIC POWER TECHNOLOGY CO.,LTD. NO PUBLICATION, DISTRIBUTION OR COPIES MAY BE MADE WITHOUT THE WRITTEN CONSENT OF TIANJIN TUOFA ELECTRIC POWER TECHNOLOGY CO.,LTD. TIANJIN TUOFA ELECTRIC POWER TECHNOLOGY CO.,LTD UNPUBLISHED ALL RIGHTS RESERVED UNDER THE COPYRIGHT LAWS.</small>		 TTF POWER TECHNOLOGY CO.