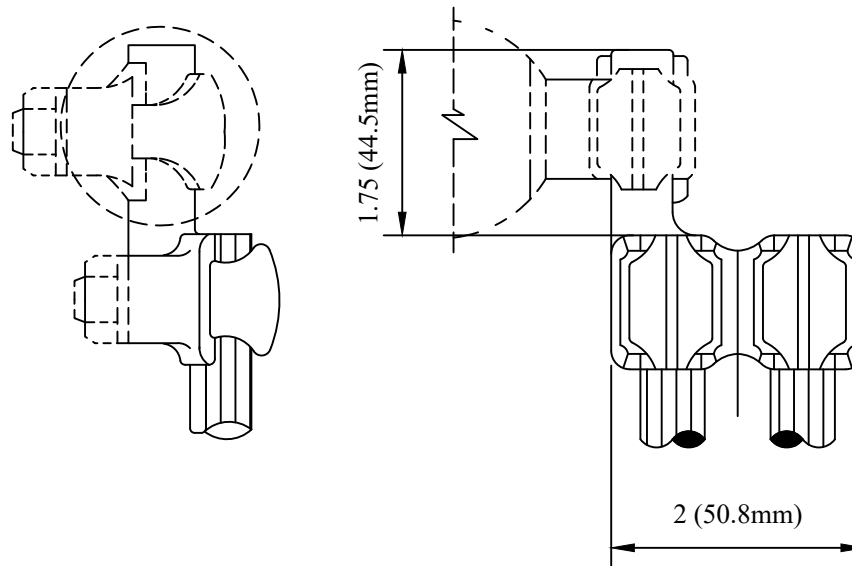


CATALOG NUMBER : 01B2E6L

PRODUCT DATA & CONDUCTOR SIZE

TRANSFORMER TERMINAL		STUD DIA.	COPPER CONDUCTOR RANGE		APPROX. WT.EACH LBS. (KG).
EYEBOLT OPENING	CONDUCTOR RANGE		CABLE	DIA.	
7/16	#8 SOL. - 2/0 STR.	3/8	#8 SOL. - 2/0 STR.	.128 - .365 (3.25 - 9.27)	.42 (.19)



NOTES:

1.MATERIAL:

CASTING - BRONZE ALLOY

EYEBOLTS - HIGH STRENGTH BRONZE

DRN BY:	DATA
Ella	07/09/16

CONFIDENTIAL THIS DRAWING AND ITS
CONTENTS PROPERTY OF TIANJIN
TUOFA ELECTRIC POWER TECHNOLOGY
CO.,LTD. NO PUBLICATION,
DISTRIBUTION OR COPIES MAY BE
MADE WITHOUT THE WRITTEN
CONSENT OF TIANJIN TUOFA ELECTRIC
POWER TECHNOLOGY CO.,LTD.
TIANJIN TUOFA ELECTRIC POWER
TECHNOLOGY CO.,LTD UNPUBLISHED
ALL RIGHTS RESERVED UNDER THE
COPYRIGHT LAWS.

DOUBLE EYEBOLT STYLE TERMINAL,
BRONZE BOLTED



TTF POWER TECHNOLOGY CO.