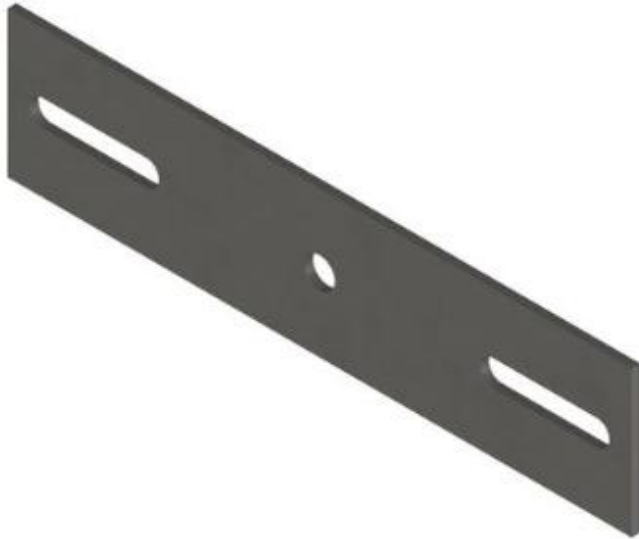




Steel Double Arming Reinforcing Plates, 1/4" x 4" x 17"



by TTF POWER TECHNOLOGY CO.,LTD

Catalog ID:SDARPW1984

Double arming plates span crossarms in double arm construction and provide a mounting position for insulator pins or deadend connections.

- 11/16" x 3-1/2" crossarm mounting slots
- 13/16" connection hole
- Galvanized steel per ASTM A-153

PRODUCTS DETAILS

General

Coating	Galvanized, ASTM A-153
Material	Steel
Type	Reinforcing Plates

Dimensions

Distance From Pole	N/A
Length	17.00 in / 432 mm
Weight	4.37 lb / 1.984 kg

Logistics

Pallet Quantity	286
-----------------	-----

For further technical assistance, please contact us

TTF POWER TECHNOLOGY CO. , LTD

Rm. 609-610 Tianjin Technology Financial Building, Tianjin, China, 300384

Phone: +86-22-85233528

Mobile: +86-15510864645

Email: ttfintlcs@ttfpower.com

Web: <https://ttfpower.com/>