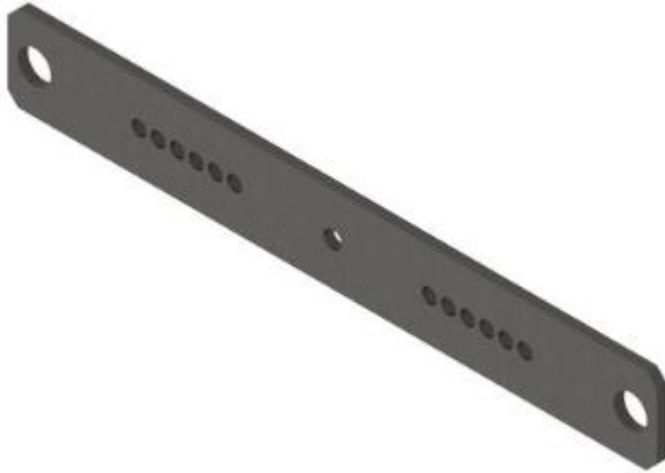




Steel Double Arming Reinforcing Plates, 1/2" x 4" x 30"



by TTF POWER TECHNOLOGY CO.,LTD

Catalog ID:SDARPW7263

Double arming plates span crossarms in double arm construction and provide a mounting position for insulator pins or deadend connections.

- 11/16" crossarm mounting holes
- Two 1-1/2" and one 13/16" connection holes
- Galvanized steel per ASTM A-153

PRODUCTS DETAILS

General

Coating	Galvanized, ASTM A-153
Material	Steel
Type	Reinforcing Plates

Dimensions

Distance From Pole	N/A
Length	30.00 in / 762 mm
Weight	16 lb / 7.263 kg

Logistics

Pallet Quantity	120
-----------------	-----

For further technical assistance, please contact us

TTF POWER TECHNOLOGY CO. , LTD

Rm. 609-610 Tianjin Technology Financial Building, Tianjin, China, 300384

Phone: +86-22-85233528

Mobile: +86-15510864645

Email: ttfintlcs@ttfpower.com

Web: <https://ttfpower.com/>